


DA10 Series

Turns Counting Dial

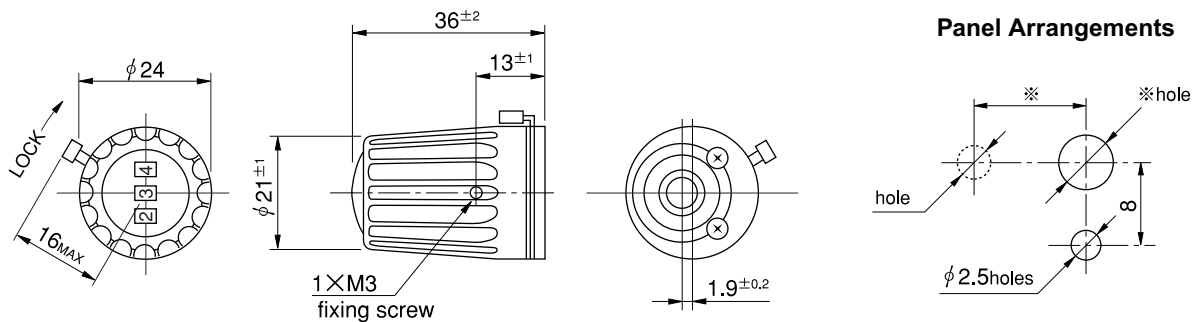


- Digital Readout (0 ~ 999)
- Locking Device
- Smooth Operation
- Up to 10 Turns
-  **RoHS**

General Specifications

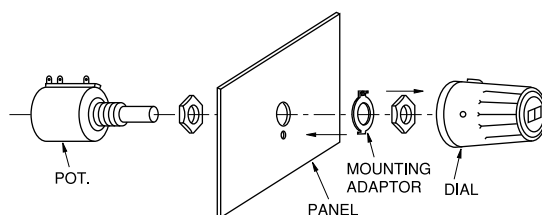
Model No	Number of Turns-Counting.	Matching Shaft Dia. (mm)		Combinable Potentiometer (Matching shaft length of 25mm)		Lock Device	Operating Temperature Range	Mass (Approx. g)
		Standard	Special					
DA10-24B6.5	10	6.35	6	MT20(H)	MT46	YES	-30°C ~ +85°C	40

Dimensions (mm)



Note: 1. The dimensions of mark * are determined by the potentiometer to be mounted.
2. 1 pc. each of mounting adaptor and the hexagonal wrench are included.

Mounting



The shaft of the potentiometer is turned counter clockwise to its limit and then inserted into the mounting hole of the dial which should be set at "000". The shaft of the potentiometer is secured by the screw positioned at the knob of the dial with the attached hexagonal wrench.

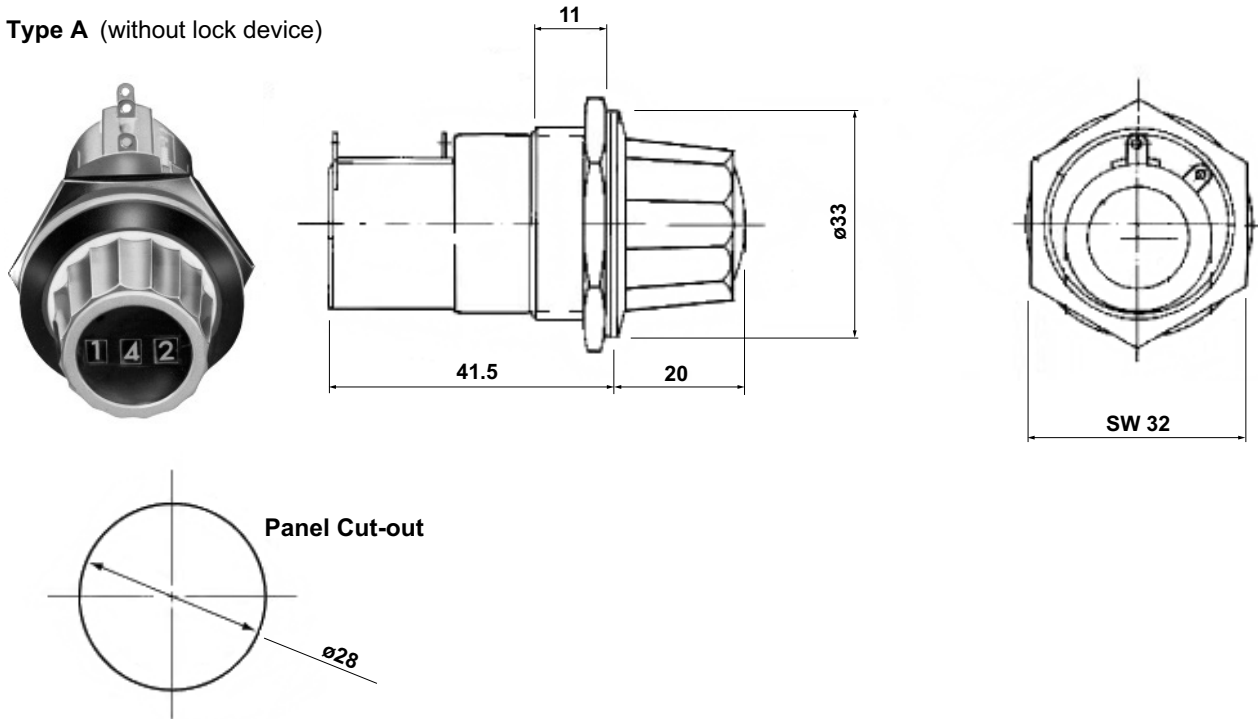
CAUTION: Do not turn set screw more than 180° during loosening as damage may occur to internal parts. Only loosen as needed to remove from shaft.

DA10 Series

Turns Counting Dial

Factory Pre-Assembled DA10 Dial with MT20 Series Potentiometers

Type A (without lock device)



Type B (with lock device)

