

DC10 Series


Turns Counting Dial



Model DC10-27B



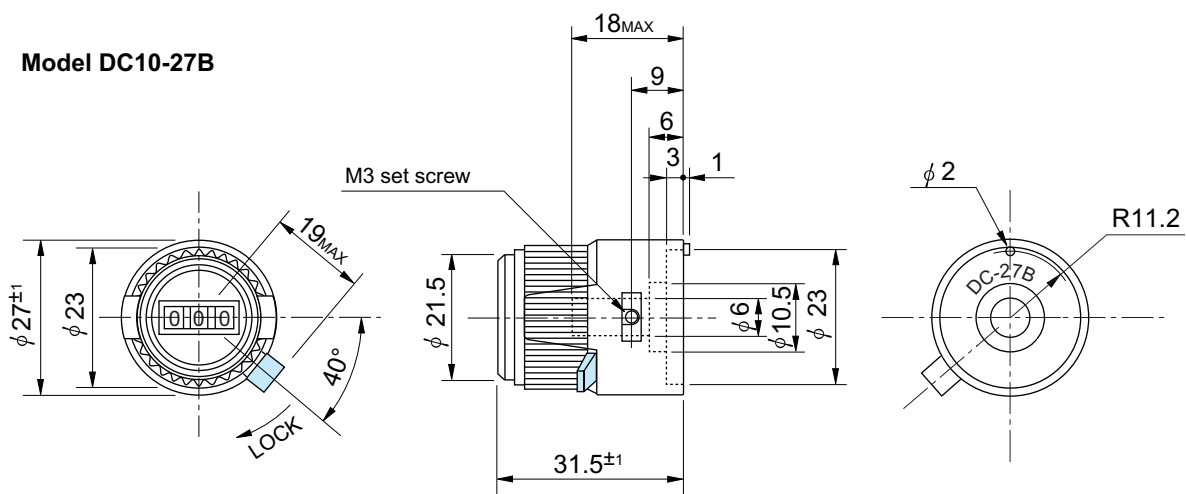
Model DC10-27BF

- Digital Readout (0 ~ 999)
- Locking Device
- Two Mounting Styles
- Up to 10 Turns
-  RoHS

General Specifications

| Model No | Number of Turns-Counting. | Max. Indication | Matching Shaft Dia. (mm) | | Combinable Potentiometer (Matching shaft length: 18.5~20.6mm) | Mounting Method (See Page 3) | Operating Temperature Range | Lock Device | Mass (Approx. g) |
|-----------|---------------------------|-----------------|--------------------------|-----------------|---|------------------------------|-----------------------------|-------------|------------------|
| | | | Standard | Special | | | | | |
| DC10-27B | 10 | 999 | 6 6.35 | 3 3.175 4 | MT22(H) MT25 | 1 | -30°C ~ +60°C | Yes | 30 |
| DC10-27BF | 10 | 999 | 6 6.35 | 3 3.175 4 | MT22(H) | 2 | -30°C ~ +60°C | Yes | 30 |
| | | | | | MT25 | 3 | | | |

Dimensions (mm)



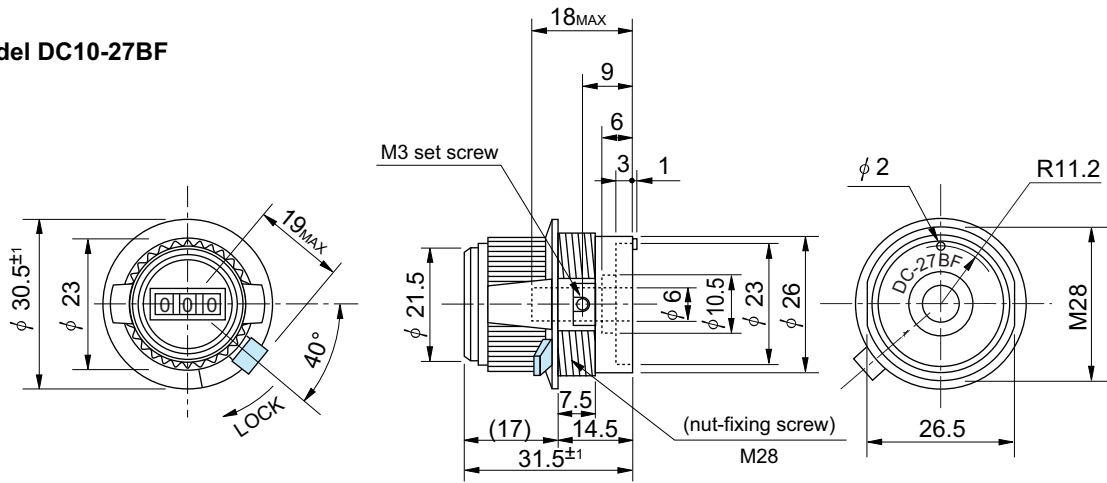
Note: One additional nut is attached as standard accessory.

DC10 Series

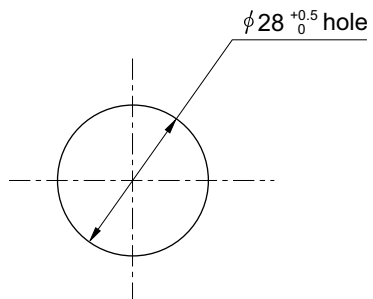
Turns Counting Dial

Dimensions (mm)

Model DC10-27BF



Panel Arrangements



Note: Fixing nut, washer and fixing nut or fixing plate are attached as standard accessory.

DC10 Series

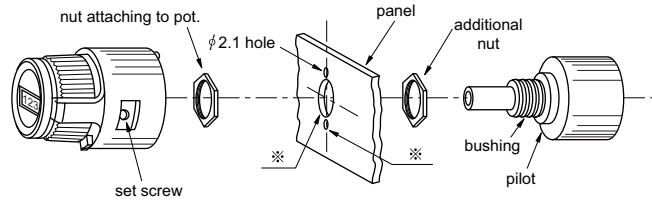
Turns Counting Dial

Mounting Methods

The shaft of the potentiometer is turned counter clockwise to its limit and then inserted into the mounting hole of the dial which should be set at "000". The shaft of the potentiometer is secured by the screw positioned at the knob of the dial with the attached hexagonal wrench.

Mounting Method 1.

DC10-27B



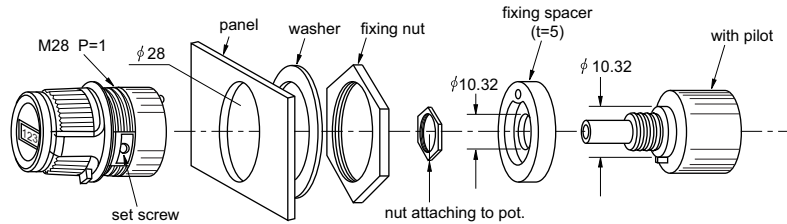
(Note 1)—The dimensions of mark * are determined by the pot. to be mounted.

(Note 2)—For our models MT22 and MT22H, please use with panel thickness below 3mm. In this case, please note the hole diameter for combining potentiometer means the bushing diameter of potentiometer bushing, not pilot diameter. For panel thickness of below 1.6mm, please use an additional nut.

Mounting Method 2.

DC10-27BF

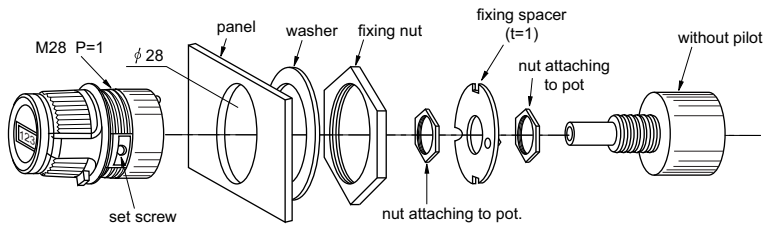
In case of combining MT22 or MT22H series potentiometers.



Mounting Method 3.

DC10-27BF

In case of combining MT25 series or other potentiometers with 20mm shaft lengths.



(Note 3)—Dials and pots. are supplied separately.

(Note 4)—For models DC10-27BF we can supply potentiometer and dial pre-assemblies, please consult us for details