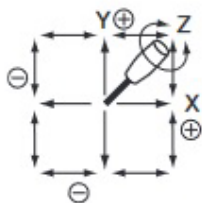


JH40H Series

Triple Axis Joystick Controller (Hall Effect)

- Triple Axis
- Hall Effect Sensors
- IP65 Protection Grade
- Redundant Output Option
- Spring Return to Center
- > 2 mio. operations life
- Push button option



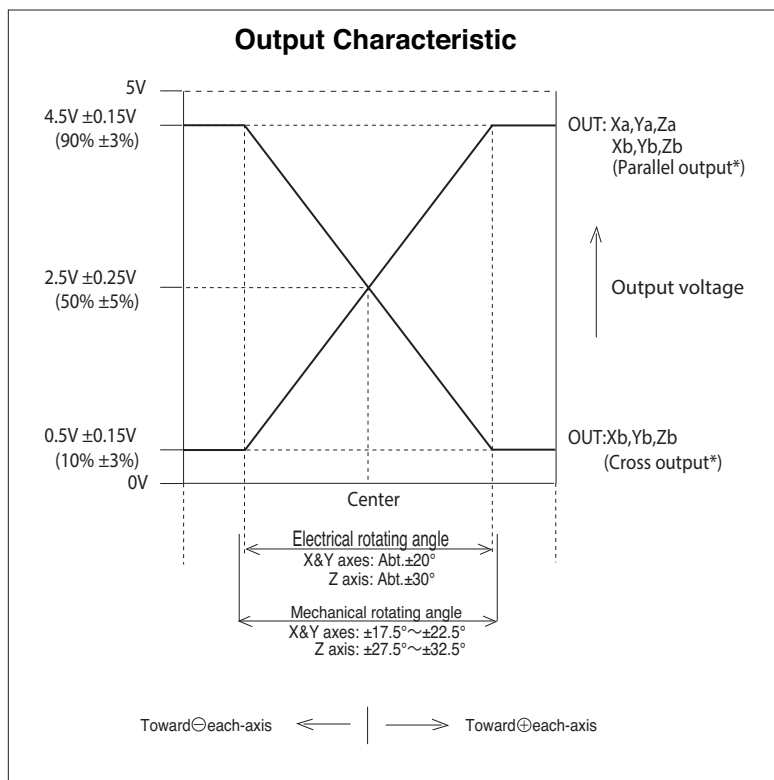
Electrical Data	
Electrical Travel	X, Y Axis: approx. 40° (±20° from center) Z Axis: approx. 60° (±30° from center)
Supply Voltage	5VDC ±10%
Load Resistance	> 10k Ω
Independent Linearity Tolerance	±3%
Resolution	Infinite
Insulation Resistance	> 1000MΩ at 500VDC
Dielectric Strength	500VAC, 1 minute
EMC Durability	100V/m

Mechanical Data (Note 1)	
Mechanical Travel	X, Y Axis: ±17.5° ~ ±22.5° from center Z Axis: ±27.5° ~ ±32.5° from center
Operating Force	X, Y Axis: 1 ~ 2N (100 ~ 200gf) Z Axis: 40 ~ 60mN·m (400 ~ 600gf·cm)
Center Return Accuracy	50% ±1.5%
Operating Temperature	-20°C ~ +65°C
Vibration	10 ~ 55Hz 98m/s ² (10G)
Shock	30G
Life Expectancy	> 2,000,000 random operations
Protection Grade	IP65
Weight	approx. 110g

JH40H Series

Triple Axis Joystick Controller (Hall Effect)

Output Voltage Characteristics / Wiring Terminations



Wiring

Pin	Function	Colour
1	Pushbutton Common	black
2	Pushbutton	white
3	GND	grey
4	Z-Axis Dual Output	violet
5	Z-Axis	blue
6	Y-Axis Dual Output	green
7	Y-Axis	yellow
8	X-Axis Dual Output	orange
9	X-Axis	red
10	+5 VDC	brown

Joysticks are supplied with AWG24 lead wires, length ca. 300 mm, connected to the joystick with mating connector LY20-10P-DLT1-P1E

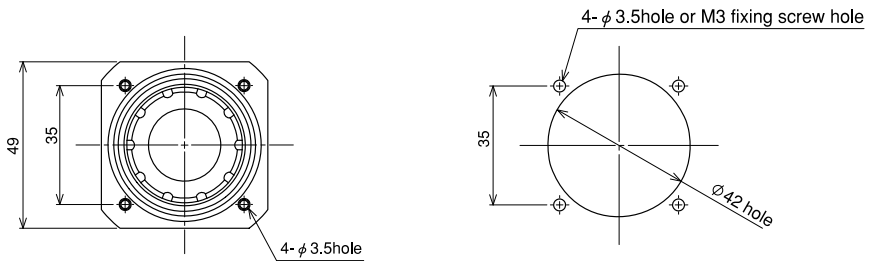
JH40H Series

Triple Axis Joystick Controller (Hall Effect)

Drawings

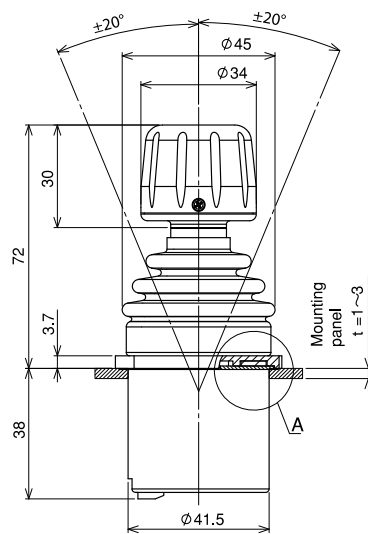
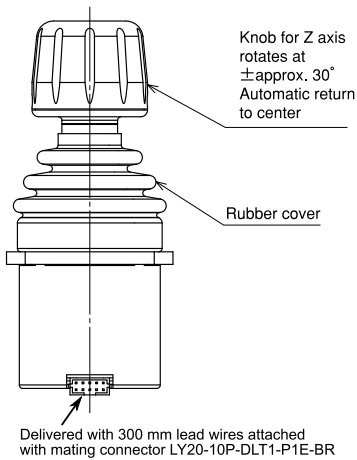
All dimensions in mm

Panel arrangements

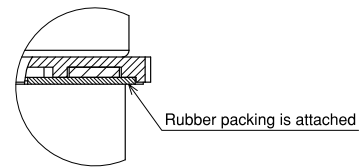


Note: 4 pcs. of mounting screws(M3X12) are attached.

Standard Handle



Detailed cross-section diagram in the area A



Pushbutton Handle

