

# JL30 Series

## Single Axis Joystick Controller (Potentiometer)



- **Single Axis**
- **Spring Return or Position Hold**
- **Handle Variations**
- **Directional Micro-switch Options**
- **IP65\* Protection Grade**
- **2 mio. operations life**
- **RoHS**



### Electrical Data (Note 1)

Electrical Travel	approx. 40° ( $\pm 20^\circ$ from center)
Resistance Value	10k $\Omega$ $\pm 20\%$
Independent Linearity Tolerance	$\pm 5\%$
Resolution	Infinite
Output Smoothness	<0.2% against applied voltage
Contact Resistance Variation	<6% C.R.V.
Dielectric Strength	500VAC, 1 minute
Insulation Resistance	>1000M $\Omega$ at 500VDC
Rated Power	0.1W
Center Tap (optional)	Current Tap Type (approx. 3°)
Micro-Switches Specifications (optional)	30VDC / 100mA (center detect or directional) SPDT

### Special Specifications Available

Special resistance values, intermediate tap, axis driven micro-switches (center detect, directional), position hold (friction increases), special cabling, Hall effect version (see JL30H series for separate datasheet), other customizations to your request.

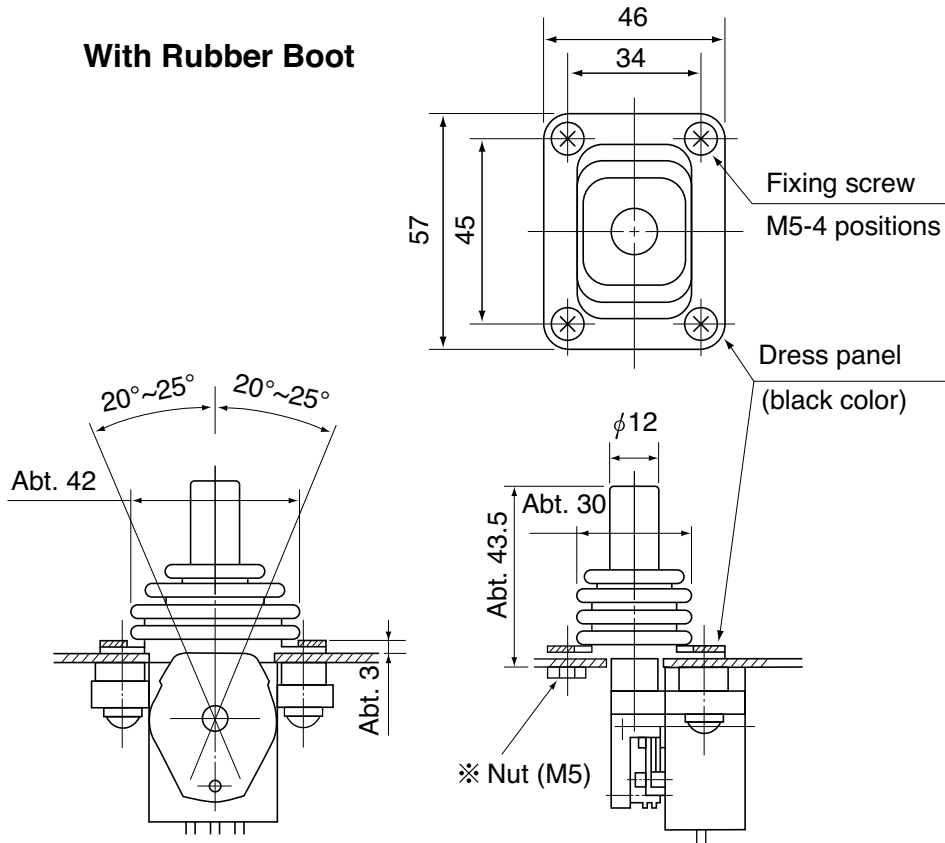
Note 1: Customers should test and verify device performance in any given application. Specifications are subject to change without notice.



# JL30 Series

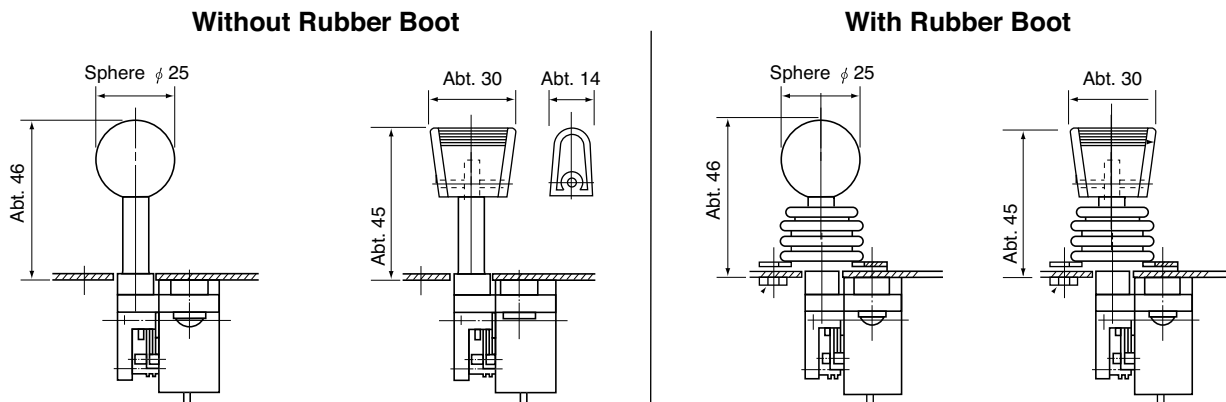
## Single Axis Joystick Controller (Potentiometer)

### Dimensions (mm)



- Note : 1) 4 pcs. of mounting screws (M5 × 12) are attached.  
2) 2 pcs. of the attached nut (M5) “※” use for mounting of the one side.

### Optional Handle Dimensions (mm)



# JL30 Series

## Single Axis Joystick Controller (Potentiometer)

### Axis Driven Micro-Switches



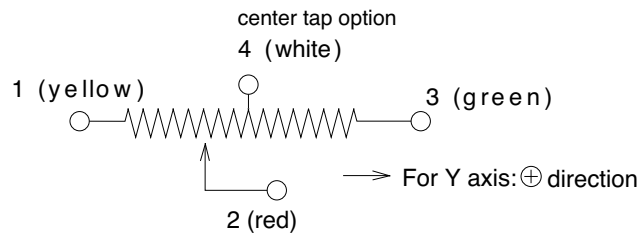
<b>Center Detect Switch</b>	Switch Type	SPDT (N.O. C N.C.)
	Electrical Rating	30VDC / 100mA
	Rated Life	> 100,000 operations
	Activation	ON @ center OFF @ $\pm 5^\circ$ from center

<b>Directional Switch</b>	Switch Type	SPDT (N.O. C N.C.)
	Electrical Rating	30VDC / 100mA
	Rated Life	> 100,000 operations
	Activation	OFF @ center *ON @ $\pm 5^\circ$ from center

\* Customer can specify activation angle of switches

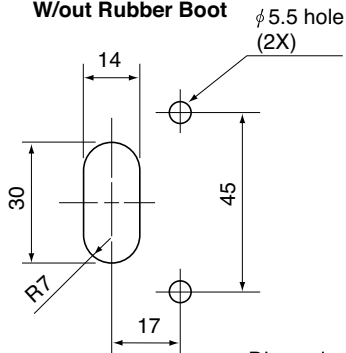
### Wiring Details

Note: Terminals shall be lead-wire terminals with approx. 300 mm. long. (AWG20)

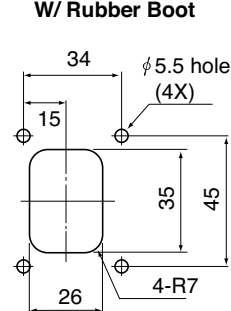


### Mounting Details

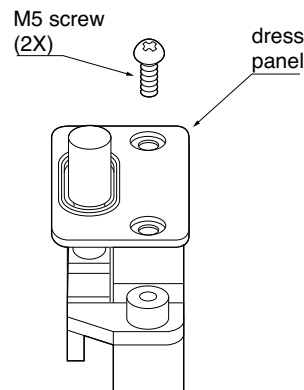
#### Panel Arrangements W/out Rubber Boot



#### Panel Arrangements W/ Rubber Boot



Dimensions (mm)



#### Mounting Panel (2mm thick) (optional)

