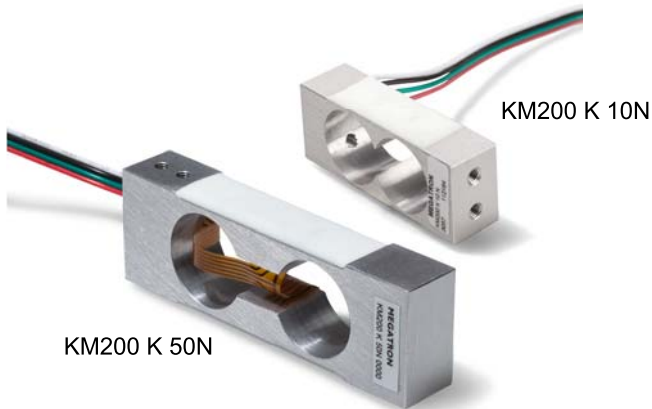


Shear Beam

Series KM200



- Compact shear beam
- Strain gauge
- Measuring body aluminium
- IP65 protection
- Calibration including measurement data

Series KM200 force sensors are double bending beam sensors and characterized by its tight shape and its easy way of fastening.

Data Load Cell

	10 N	50 N
Rated force	10 N	50 N
Rated characteristic value	0.6 mV / V of rated output	1.2 mV / V of rated output
Relative error of characteristic value	≤ 10 % of rated output	
Relative repeatability error	≤ 0.05 % of rated output	≤ 0.03 % of rated output
Relative reversibility error	≤ 0.05 % of rated output	≤ 0.03 % of rated output
Relative linearity error	≤ 0.05 % of rated output	≤ 0.03 % of rated output
Reference straight line	≤ 0.05 % of rated output	≤ 0.03 % of rated output
Relative deviation of zero signal	≤ 3 % of rated output	
Input resistance	350 ±3Ω	410 ±5Ω
Output resistance	350 ±3Ω	
Insulation resistance	≥ 5 GΩ @ 50 V DC	
Rated range of excitation voltage	10 V DC / AC	
Operating range of excitation voltage	≤ 15 V DC / AC	
Rated temperature range	-10 °C .. +70 °C	
Operating temperature range	-10 °C .. +40 °C	
Protection	IP65	
Temperature effect on characteristic value	≤ 0.3 % of rated output / 10 K	≤ 0.03 % of rated output / 10 K
Temperature effect on zero signal	≤ 0.3 % of rated output / 10 K	≤ 0.03 % of rated output / 10 K
Creep under load	≤ 0.05 % of rated output	≤ 0.03 % of rated output
Cable dimension	4 x AWG30	4 x AWG28
Cable length from body	ca. 80 mm	
Body material	Aluminium	
Mass	ca. 15 g	ca. 40 g

Shear Beam

Series KM200

Order code

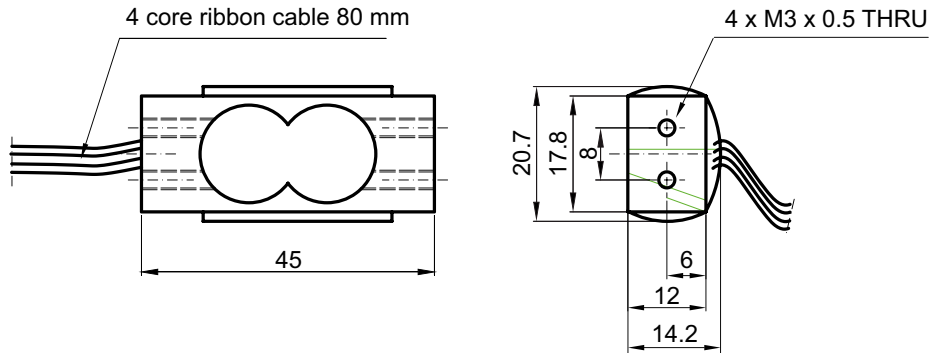
Description			
Selection: standard=black/bold, possible options=grey/cursive			
Series:	KM200		
Connecting cable: Cable length 80 mm		K	
Rated force: 10 N 50 N			10N 50N

Accessories (not included)

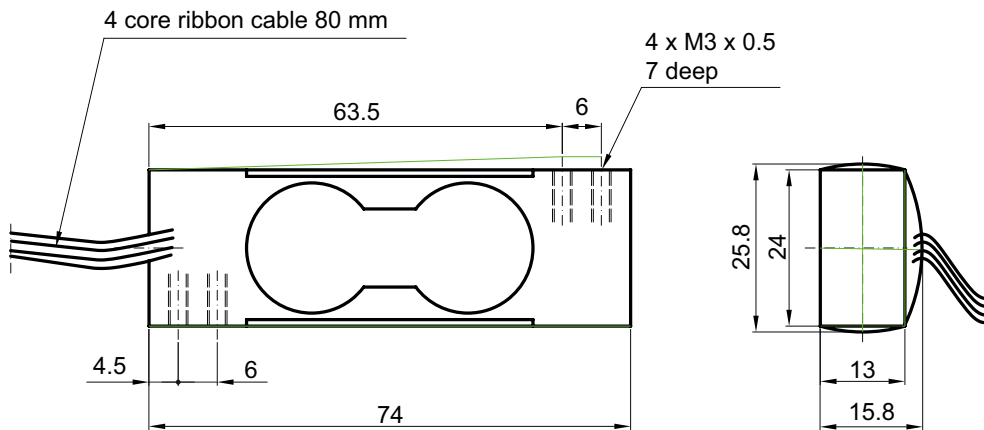
Measuring amplifier	IMA2 DMS
----------------------------	-----------------

Drawing

KM200 10N



KM200 50N



Cable assignment

For tension:

- Red: +input
- Black: -input
- Green: +output
- White: -output

For pressure:

- Red: +input
- Black: -input
- Green: -output
- White: +output

Dimensions in mm

**Connection diagram
tension**

