

Linear Motion Conductive Plastic Potentiometer

Series MSL38



- Shaftless - Sliding Cursor
- Pivot Linkage
- Adjustable Mounting Brackets
- Anodized Aluminum Housing
- 100mm to 2000mm Stroke Lengths
- Up to 10 m/s Displacement Speed

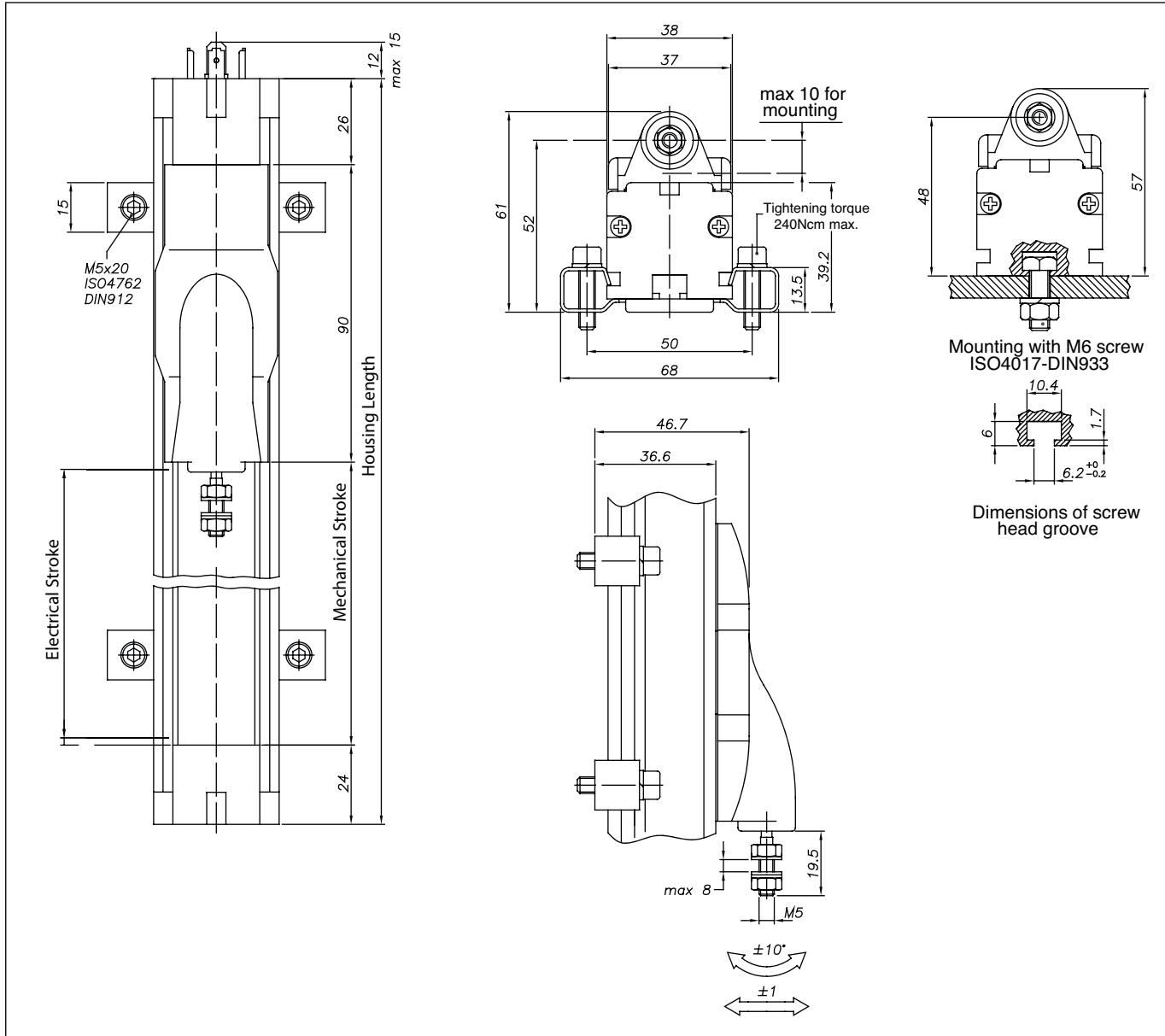
Electrical Data (Note 1)	MSL38 -	100	150	200	250	300	350	400	450	500	600	750	850	900	950	1000	2000
Electrical Stroke (mm ±1)		100	150	200	250	300	350	400	450	500	600	750	850	900	950	1000	2000
Resistance Value		5kΩ						10kΩ						20kΩ			
Resistance Tolerance		±20%															
Independent Linearity Tolerance		±0.1%		±0.05													
Power (@ 40°C)		3W															
Max. Operating Voltage		60V															
Resolution		Essentially infinite															
Temperature Coefficient Resistance		400 ppm/°C															
Temperature Coefficient Voltage Divider		≤ 5 ppm/°C															
Insulation Resistance		> 100M Ω at 500VDC															
Dielectric Strength		< 100 μA at 500V~, 50Hz, 2s, 1 bar															
Maximum Wiper Current		10mA															
Recommended Wiper Current		< 0.1μA (voltage divider circuit)															

Mechanical Data (Note 1)	MSL38 -	50	100	150	200	250	300	350	400	450	500	600	750	850	900	950	1000
Mechanical Stroke (mm ±1)		55	105	155	205	255	305	355	405	455	505	605	755	855	905	955	1005
Cursor Drag Force		≤ 1.2N															
Max. Displacement Speed		≤ 10 m/s															
Life Expectancy		> 25,000,000 reciprocating motions															
Operating Temperature		-30°C to +100°C															
Storage Temperature		-45°C to +120°C															
Vibration		20G 5 to 2,000Hz															
Shock		50G, 11ms															
Protection Grade		IP40															
Housing Material		Anodized aluminum, Nylon 66 G 25															
Mounting		Adjustable Brackets															

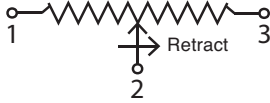
Note 1: Customers should test and verify device performance in any given application. General specifications values are measured at temperatures of +15°C ~ +35°C. Specifications are subject to change without notice.

Dimensions (mm)

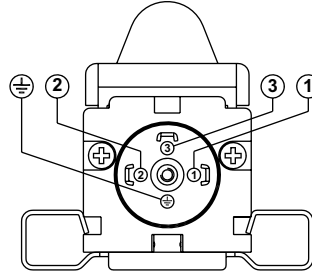
Series MSL38



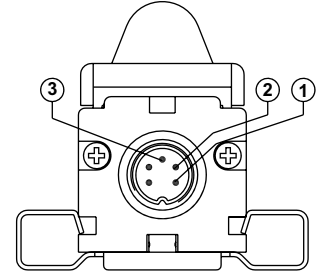
MODEL		100	150	200	250	300	350	400	450	500	600	700	750	850	900	1000	2000
Electrical stroke ±1	mm	100	150	200	250	300	350	400	450	500	600	700	750	850	900	1000	2000
Mechanical stroke	mm	113	163	214	264	315	365	416	468	519	621	723	773	875	925	1027	2031
Housing length	mm	253	303	354	404	455	505	556	608	659	761	863	913	1015	1065	1167	2171



4-pole connector
(standard)



Optional 5-pole
(IP65) connector



INSTALLATION INSTRUCTIONS

- Respect the indicated electrical connections (DO NOT use the transducer as a variable resistance)
- When calibrating the transducer, be careful to set the stroke so that the output does not drop below 1% or rise beyond 99% of the supply voltage.