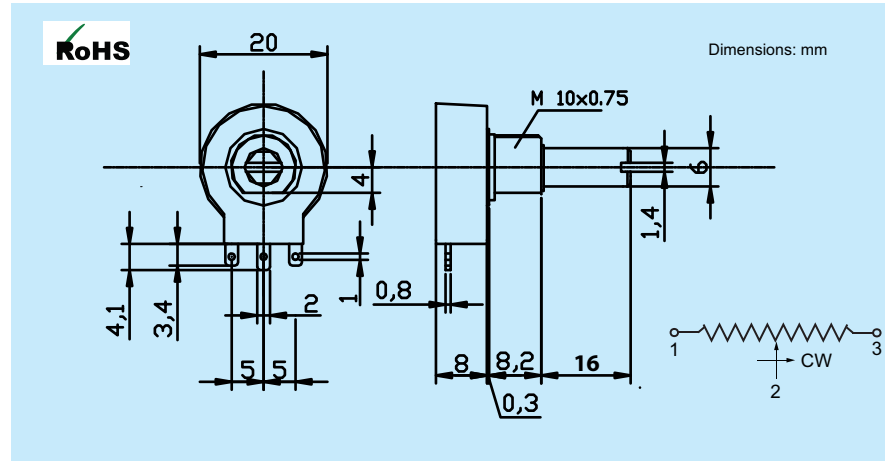


# POD20-MS-16 Series

## Single Turn Potentiometer (Wire-Wound)



### • General Specifications

<b>Resistance Value ( <math>\Omega</math>):</b>	100, 200, 500, 1K, 2K 5K, 10K, 20K	<b>Electrical Angle:</b>	318°
<b>Resistance Tolerance:</b>	±5%	<b>Mechanical Angle:</b>	320°
<b>Independent Linearity:</b>	±0.5%	<b>Temperature Coefficient:</b>	±40 ppm/°C
<b>End Resistance:</b>	< 1% R <sub>tot</sub> (min. 3 ohms)	<b>Insulation Resistance:</b>	10G $\Omega$
<b>Max. Wiper Current:</b>	50 mA	<b>Dielectric Strength:</b>	1 minute at 1,000V.A.C.
<b>Max. Contact Resistance:</b>	max.. 100 $\Omega$ @ 1mA	<b>Starting Torque:</b>	0.7 Ncm
<b>Power Rating:</b>	2.0W @ 40°C	<b>Vibration:</b>	10 G
<b>Rotational Life:</b>	100,000 Cycles	<b>Shock:</b>	50 G
<b>Noise:</b>	Below 100 $\Omega$ E.N.R.	<b>Operating Temperature:</b>	-25° to +105°C
		<b>Protection Grade:</b>	IP65
		<b>Housing:</b>	Thermoplast
		<b>Shaft:</b>	Nickel plated brass
		<b>Terminals:</b>	Brass, gold plated

### • Options

Non standard resistance values. Special shaft machining. Special electrical angles. Customer specified cabling and connectorization.