

RH24PC Series

Single Turn Hollow Shaft Potentiometer (Conductive Plastic)



Pre-wire Option

- Direct to shaft mounting, no couplings.
- Low profile
- 5,000,000 turns life
- 340° measuring angle or to your specifications
- Flange ears for simple installation

The series RH24PC is a low profile hollow shaft precision potentiometer. 340° electrical angle or can be produced to your specific angle requirements. Easy installation with flange mount.

Electrical Data

Resistance values	1k, 2k, 5k, 10k, 20k, 50k, 100k
Resistance tolerance	20% (Optional; 10%)
Effective electrical angle of rotation	340° ±5°
Independent linearity	±2.0% (optional; 1% or 0.5%)
Resolution	Essentially infinite
Temperature coefficient of resistance	±400 ppm/deg C
Power rating @ 70°C	0.5 watt
Insulation resistance	500 Mohms @ 500 VDC
Dielectric strength	500 VAC @ 50 Hz
Max. wiper current	1 mA

Mechanical and Environmental Data

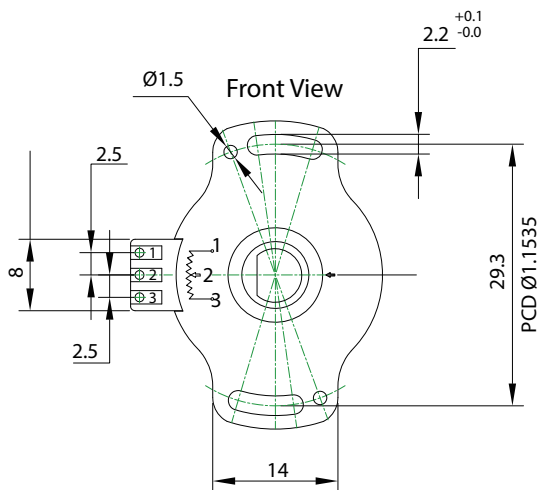
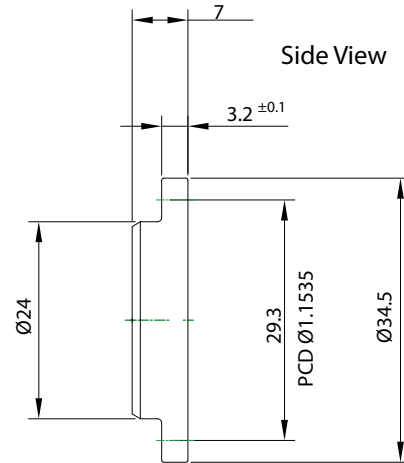
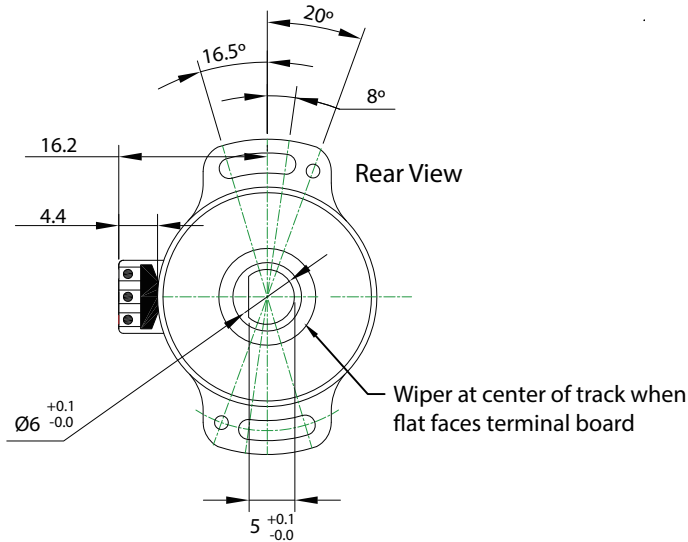
Mechanical angle of rotation	360° (continuous)
Starting torque	< 1Ncm
Operating torque	< 0.5 Ncm
Operating temperature	-40°C...+105°C
Rotational life	5,000,000 shaft revolutions
Bearing	Sleeve, brass on one end
Protection class	IP40
Housing material	Engineered plastic
Shaft (hollow) material	Engineered plastic

Note: Customers should test and verify device performance in any given application. General specifications values are measured at +15°C ~ +35°C. Please consult us if application is in higher or lower temperatures. Shaft modifications are possible, please consult us. Specifications subject to change without notice.

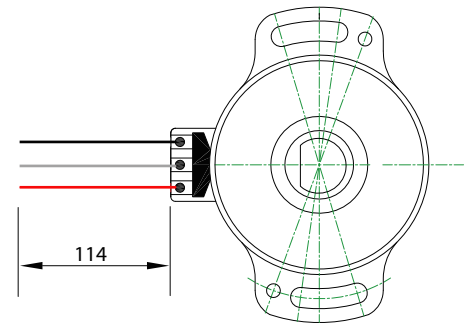
RH24PC Series

Single Turn Hollow Shaft Potentiometer (Conductive Plastic)

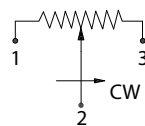
Dimensions (mm)



Pre-Wired Option



Schematic



Schematic

