

## RPH

Linear Potentiometer

Long Stroke Series 100 - 1950 mm



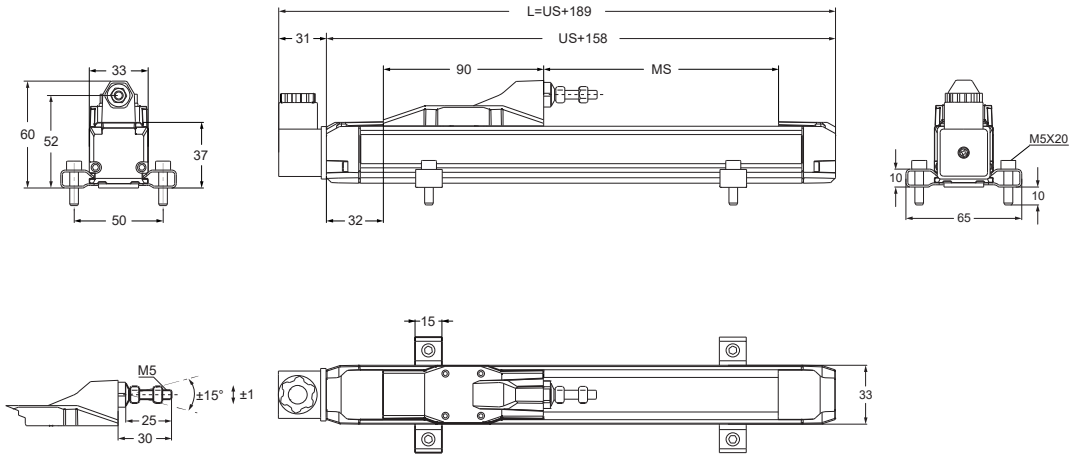
## 1. TECHNICAL SPECIFICATIONS

Measurement stroke	100 - 1950 mm
Resolution	Infinite
Repeatability	< 0.01 mm
Permissible applied voltage	28 VDC max.
Electrical connections	<b>CH1:</b> Hydraulic type, 4 pin connector output (standard - mating connector included) <b>CN5A</b> (M12) or <b>CN5B</b> (M16), 5 pin connector output (optional - mating connector not included) <b>Cable output</b> (optional)
Displacement speed	< 1,5 m/s
Mechanical life	100 million movement
Protection level	IP 40 / upside down IP 53
Resistance	5 kOhm : 100 - 600 mm 10 kOhm : 650 - 1.000 mm 20 kOhm : 1.250 - 1950 mm
Resistance tolerance	± %20
Load resistance	100 kOhm min.
Recommended wiper current	<1 µA
Linearity	B: ±%0.2 (100 - 125 mm) C: ±%0.1 (130 - 225 mm) D: ±%0.05 ( ≥ 250 mm)
Case dimensions	33 mm x 32 mm
Case material	Anodized aluminium
Caps material	ABS Plastic
Mechanical fixing	Variable brackets
Operating temperature	-20°C ... +80°C
Storage temperature	-30°C ... +90°C

## 2.MECHANICAL SPECIFICATIONS

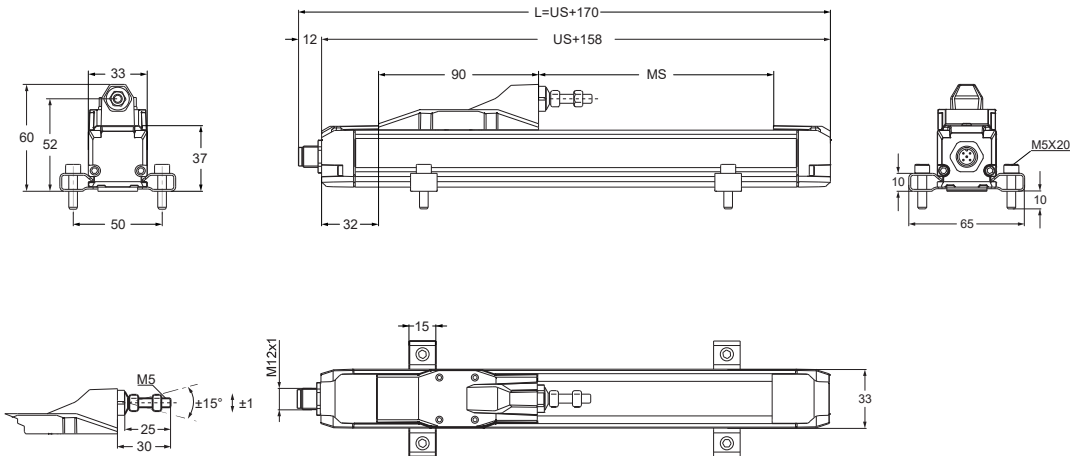


### CH1: Hydraulic type, 4 pin connector output (standard- mating connector included)



RPH (mm)	100	125	130	150	175	200	225	250	275	300	325	350	375	400	450	500	550	600	650	700	750	800	850	900	1000	1250	1500	1750	1950
US (Usefull stroke)	100	125	130	150	175	200	225	250	275	300	325	350	375	400	450	500	550	600	650	700	750	800	850	900	1000	1250	1500	1750	1950
MS (Mechanical stroke)	104	129	134	154	179	204	229	254	279	304	329	354	379	404	454	504	554	604	654	704	754	804	854	904	1004	1254	1504	1754	1954
L (Total length)	289	314	318	339	364	389	414	439	464	489	514	539	564	589	634	689	739	789	839	889	939	989	1039	1089	1189	1439	1689	1939	2139

### CN5A (M12) or CN5B (M16), 5 pin connector output (optional - mating connector not included)

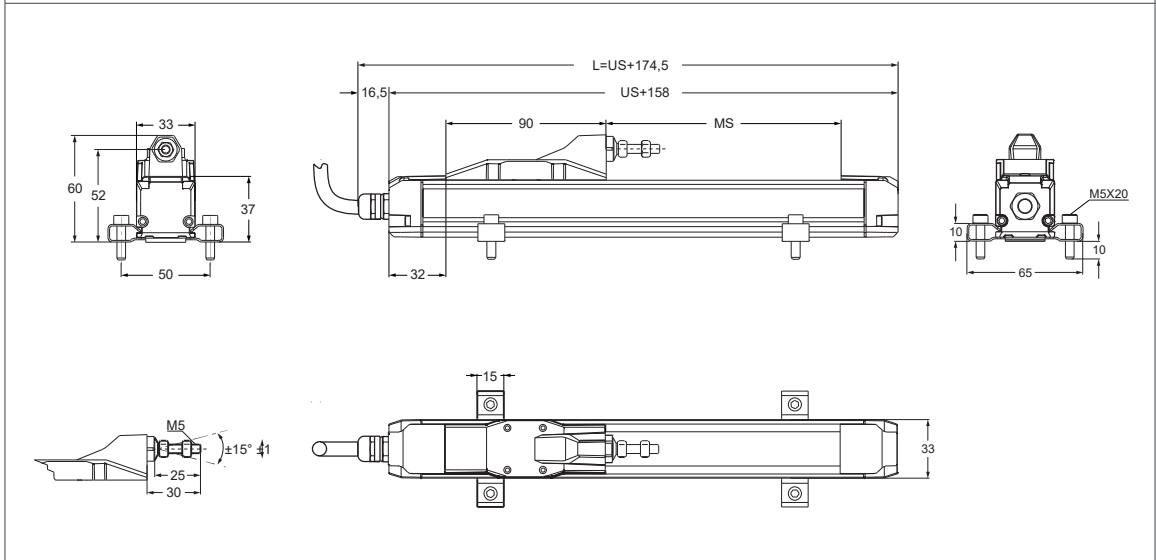


RPH (mm)	100	125	130	150	175	200	225	250	275	300	325	350	375	400	450	500	550	600	650	700	750	800	850	900	1000	1250	1500	1750	1950
US (Usefull stroke)	100	125	130	150	175	200	225	250	275	300	325	350	375	400	450	500	550	600	650	700	750	800	850	900	1000	1250	1500	1750	1950
MS (Mechanical stroke)	104	129	134	154	179	204	229	254	279	304	329	354	379	404	454	504	554	604	654	704	754	804	854	904	1004	1254	1504	1754	1954
L (Total length)	270	295	300	320	345	370	395	420	445	470	495	520	545	570	620	670	720	770	820	870	920	970	1020	1070	1170	1420	1670	1920	2120



P3 America, Inc. Phone: (512) 337-7336  
 7696 183A Toll Rd. sales@p3america.com  
 Unit 7B www.p3america.com  
 Leander TX 78641

**Cable output (optional)**

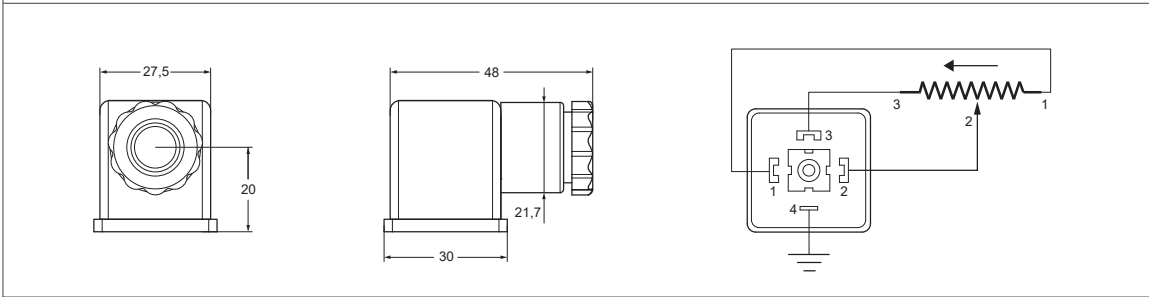


RPH (mm)	100	125	130	150	175	200	225	250	275	300	325	350	375	400	450	500	550	600	650	700	750	800	850	900	1000	1250	1500	1750	1950
US (Usefull stroke)	100	125	130	150	175	200	225	250	275	300	325	350	375	400	450	500	550	600	650	700	750	800	850	900	1000	1250	1500	1750	1950
MS (Mechanical stroke)	104	129	134	154	179	204	229	254	279	304	329	354	379	404	454	504	554	604	654	704	754	804	854	904	1004	1254	1504	1754	1954
L (Total length)	274,5	299,5	304,5	324,5	349,5	374,5	399,5	424,5	449,5	474,5	499,5	524,5	549,5	574,5	624,5	674,5	724,5	774,5	824,5	874,5	924,5	974,5	1024,5	1074,5	1174,5	1424,5	1674,5	1924,5	2124,5

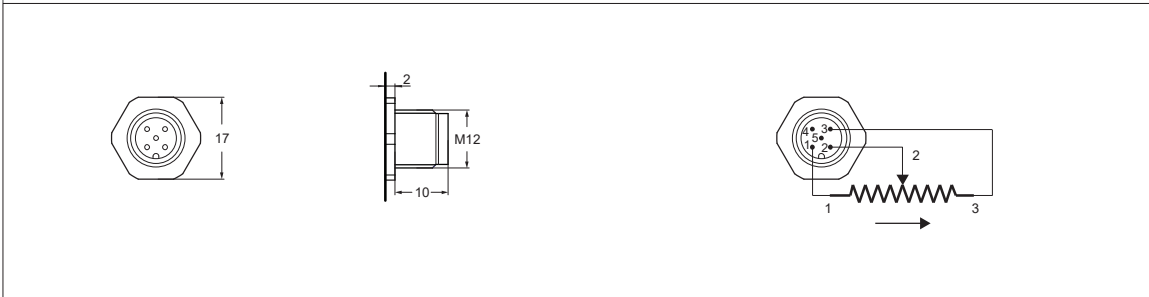
### 3.CONNECTORS, CABLE AND BRACKET



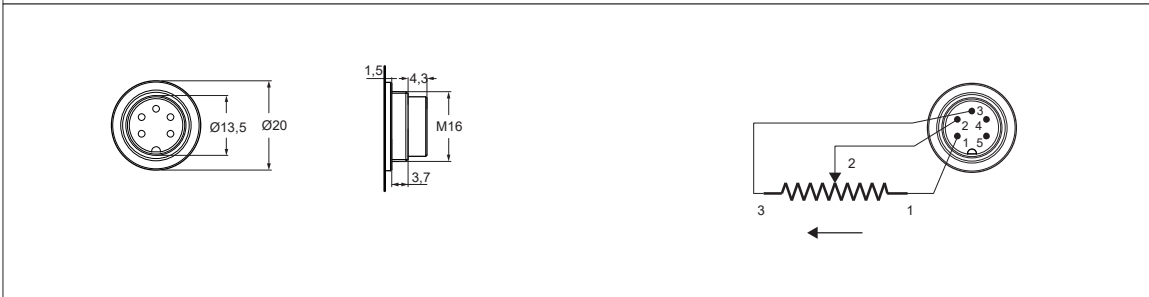
**CH1: Hydraulic type, 4 pin connector output (standard - mating connector included)**



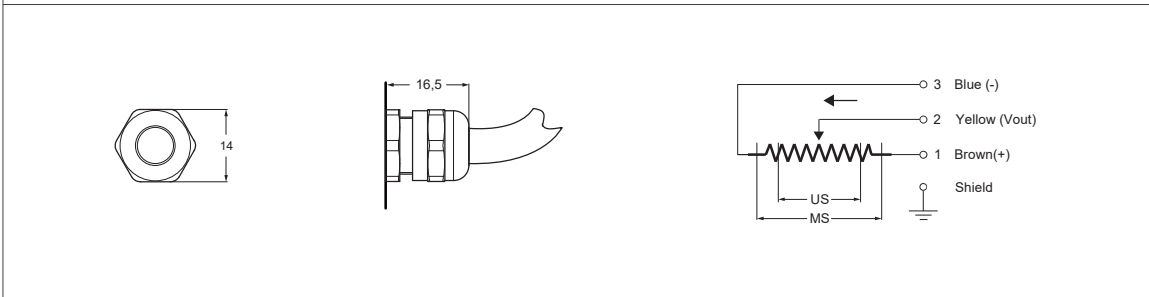
**CN5A: M12, 5 pin connector output (optional - mating connector not included)**



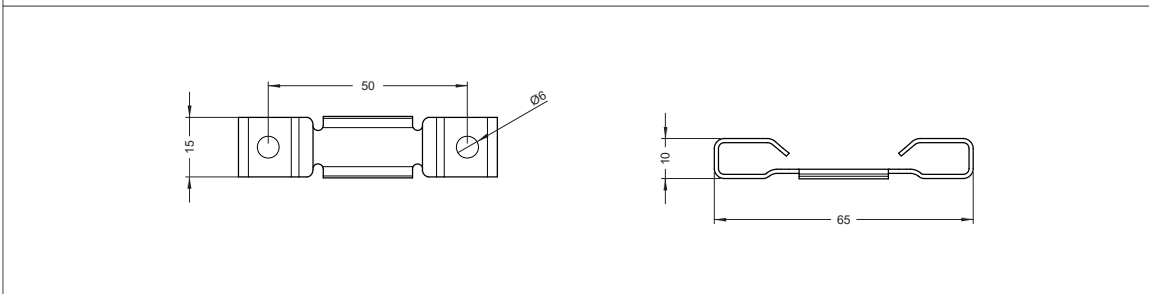
**CN5B: M16, 5 pin connector output (optional - mating connector not included)**



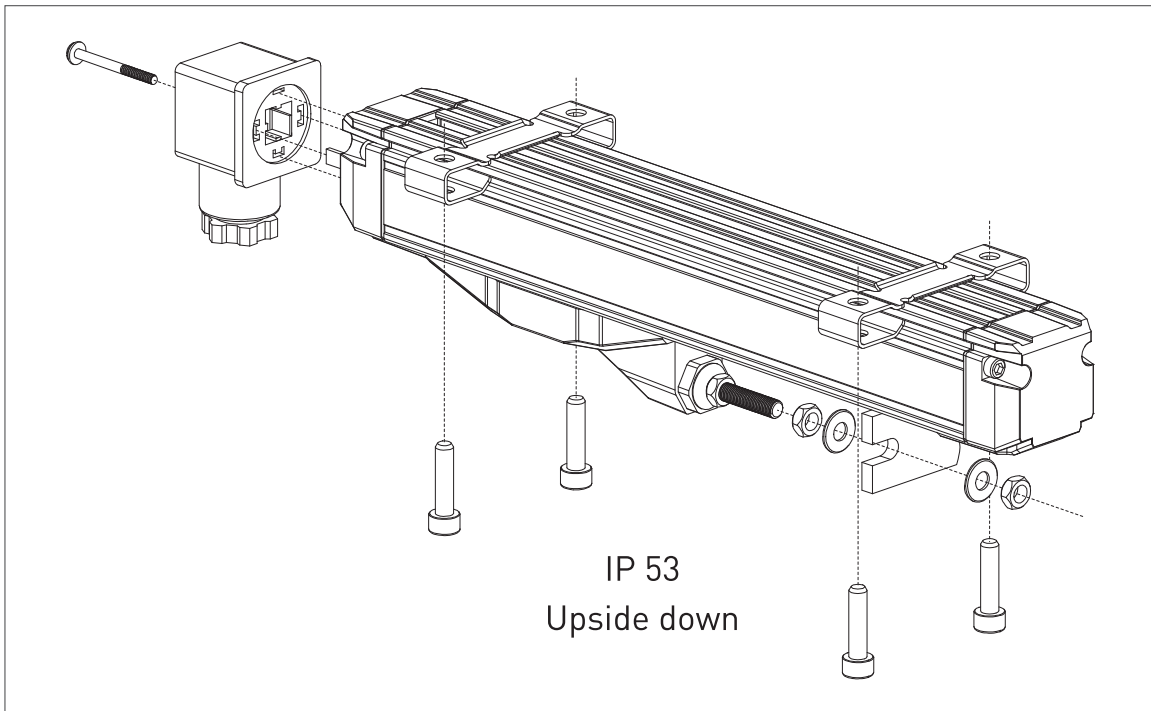
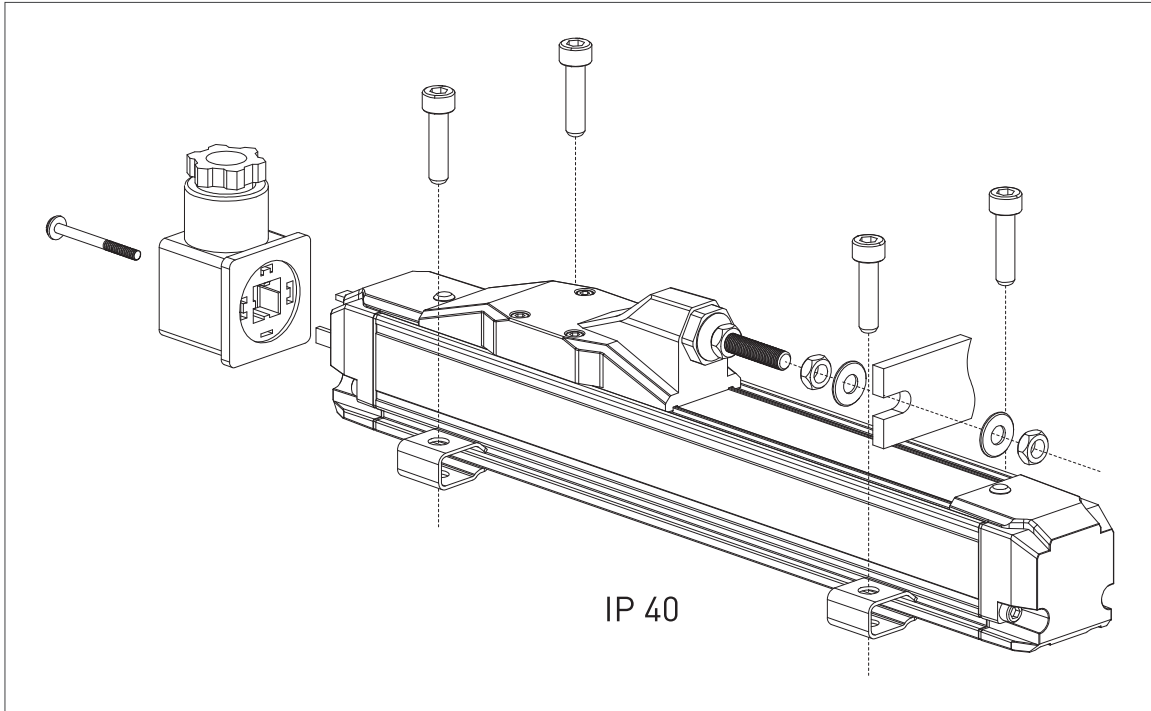
**Cable output (optional)**



**BR02: Bracket - included**



4.ASSEMBLY IP PROTECTION LEVEL



P3 America, Inc. Phone: (512) 337-7336  
7696 183A Toll Rd. sales@p3america.com  
Unit 7B www.p3america.com  
Leander TX 78641

## 5. ORDERING PROCEDURE

1	<b>Model</b> RPH: Linear Potentiometer Long Stroke Series
2	<b>Measuring range</b> 100 - 1950 mm
3	<b>Linearity</b> B: $\pm 0.2\%$ (100 - 125 mm) C: $\pm 0.1\%$ (130 - 225mm) D: $\pm 0.05\%$ ( $\geq 250$ mm)
4	<b>Resistance (kOhm)</b> 5K : 5 kOhm (100 - 600 mm) 10K: 10 kOhm (650 - 1.000 mm) 20K: 20 kOhm (1.250 - 1950 mm)
5	<b>Connector / Cable</b> CH1: Hydraulic type, 4 pin connector (standard - mating connector included) CN5A: 5 pin, M12 connector (optional - mating connector not included) CN5B: 5 pin, M16 connector (optional - mating connector not included) 1M: 1 meter cable (optional)

For example:

<b>RPH</b>	<b>500</b>	<b>D</b>	<b>5K</b>	<b>CH1</b>
1	2	3	4	5