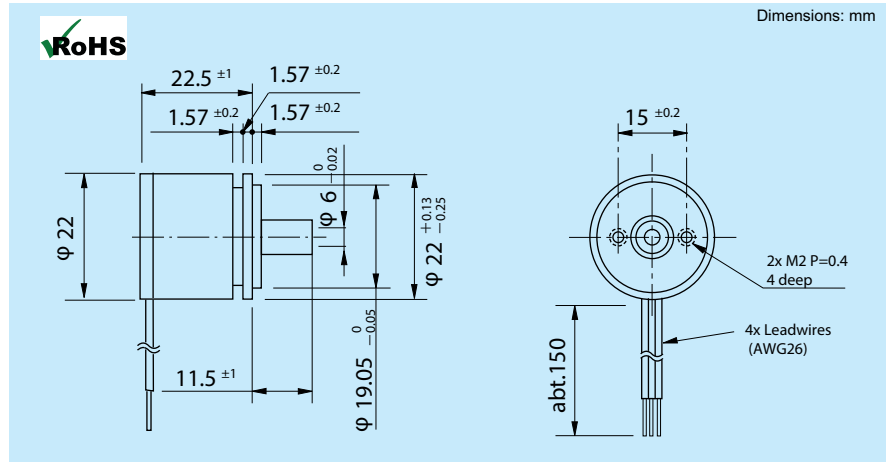


# SCH22 Series

## Single Turn Sine/Cosine Potentiometer (Hall Effect)



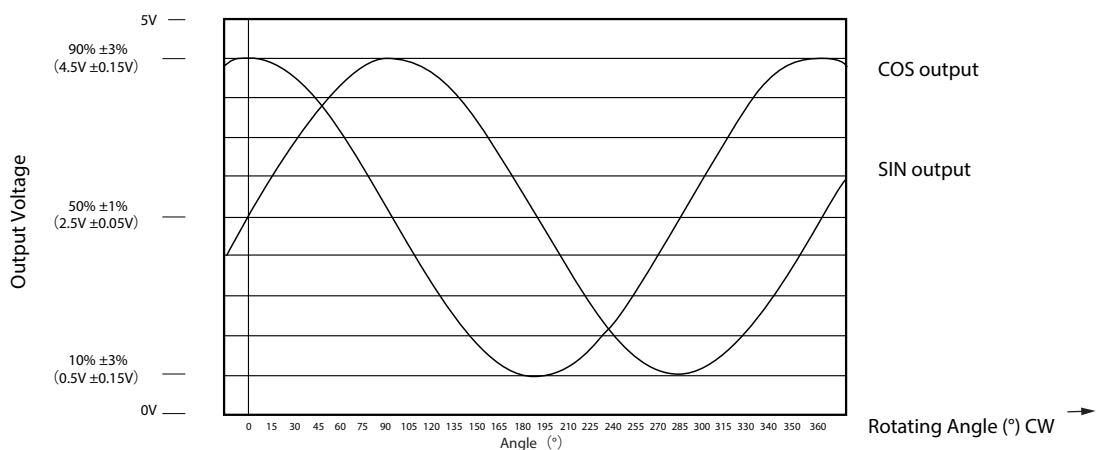
### • General Specifications (Note)

Current Consumption	Approx. 15mA
Conformity Tolerance	±0.8%FS (FS=360°)
Mechanical Rotating Angle	360° (continuous)
Effective Electrical Angle	360° (fractional possible)
Applied Voltage	5V ±10%
Load resistance	10kΩ min
Output Voltage Range	0.5V ~ 4.5V
Output Temperature Characteristics	Within ±1% Vout/FS
Operating Temperature Range	-40°C ~ +105°C
Storage Temperature Range	-50°C ~ +105°C
Mass	Approx. 30g
Rotating Torque	Within 0.5mN·m

### • Environmental Specifications

Thermal Shock	5 cycles -50°C ~ +105°C
Exposure at Low Temperature	24 hours at -50°C
Exposure at High Temperature	1,000 hours at +105°C
Vibration	10 to 2,000Hz 196m/s <sup>2</sup>
Shock	980m/s <sup>2</sup> 6ms
Rotational Life Expectancy	Approx. 100,000,000 (no load)
EMC Durability	100V/m (80MHz~1GHz 1KHz 80% Amplitude Modulation)
ESD Durability	±8kV contact discharge /±15kV aerial discharge

### • Output Characteristics



Note: Customers should test and verify device performance in any given application. Shaft modifications are possible, please consult us. Specifications subject to change without notice.