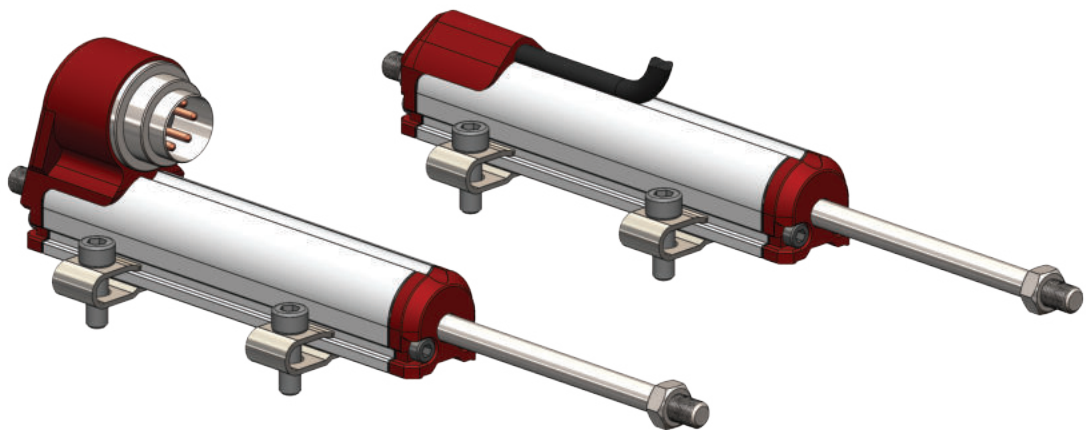


## SLPK

Linear Potentiometer 10 - 200 mm

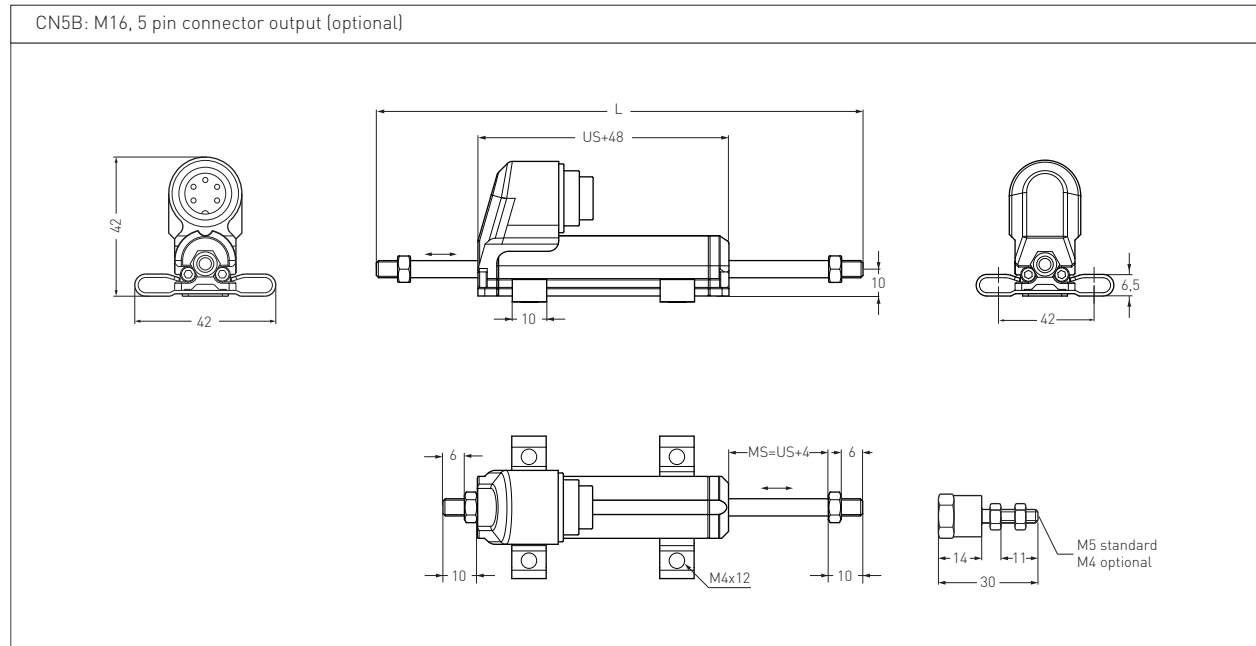
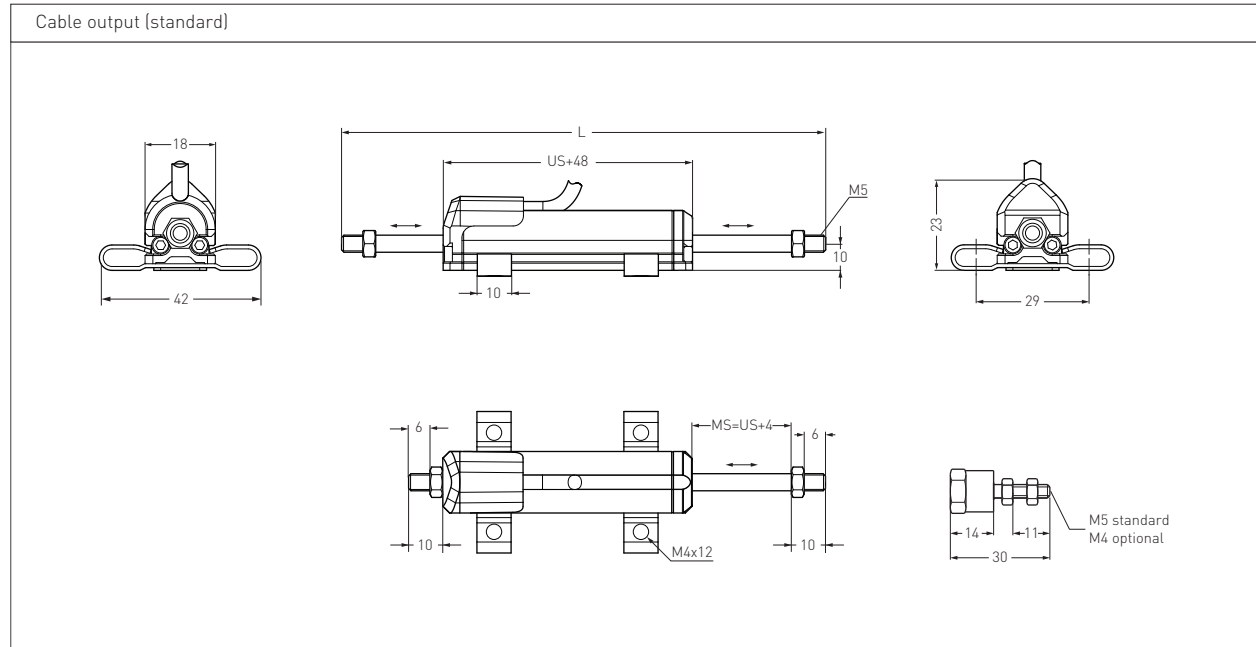
Slim Body Series, Rod On The Both Sides



## 1. TECHNICAL SPECIFICATIONS

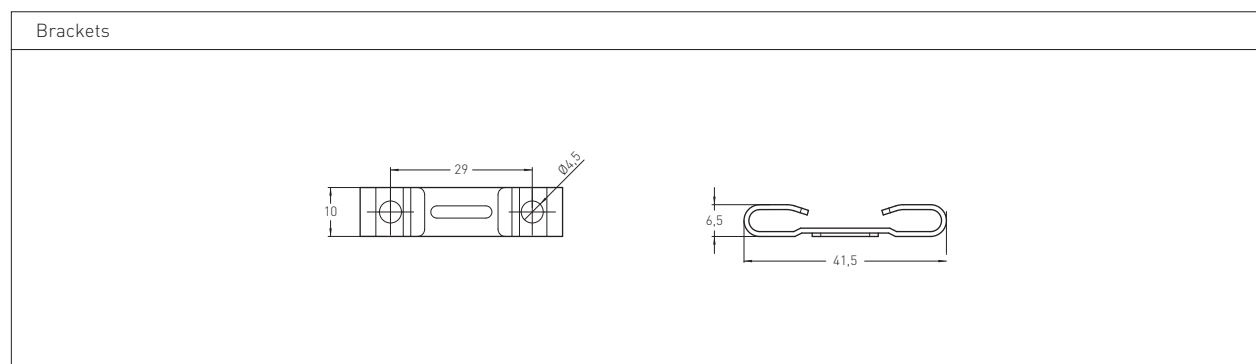
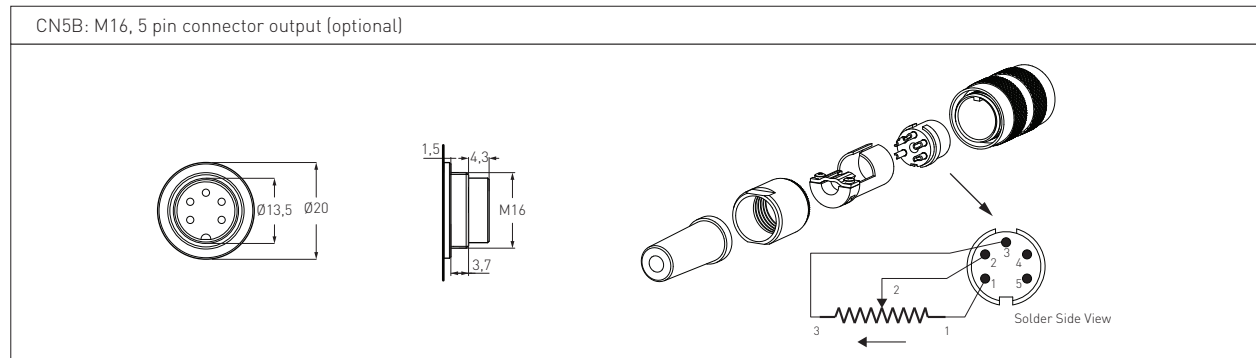
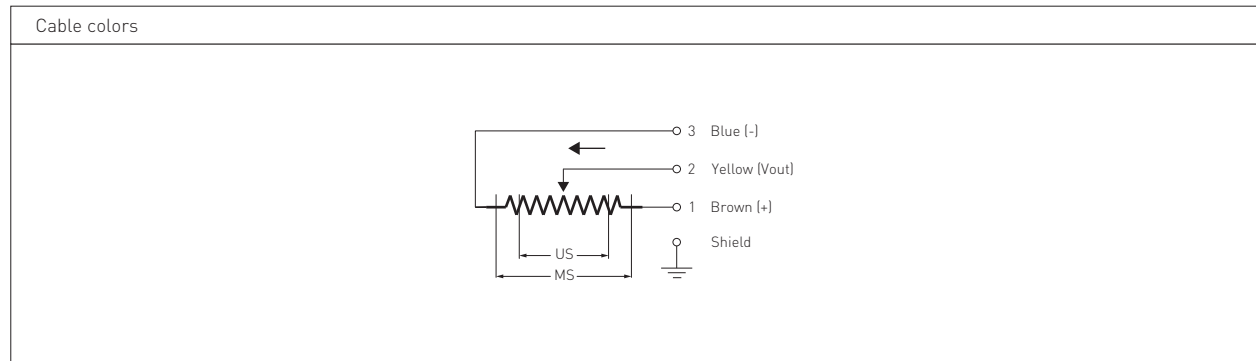
Measurement stroke	10 - 200 mm
Repeatability	< 0.01 mm
Resolution	Infinite
Permissible applied voltage	28 VDC max.
Electrical connections	Cable output (standard) CN5B: M16, 5 pin connector output (optional)
Displacement speed	< 5 m/s
Mechanical life	100 million movement
Protection level	IP 40
Resistance	2 kOhm: 10 - 50 mm 5 kOhm: 75 - 200 mm
Resistance tolerance	± %20
Load resistance	100 kOhm min.
Recommended wiper current	<1 µA
Linearity	A: ±%0.5 (≤75 mm) B: ±%0.2 (100 - 125 mm) C: ±%0.1(130 - 200 mm)
Case dimensions	Ø18 mm
Case material	Anodized aluminium
Caps material	ABS Plastic
Rod material	Stainless steel
Rod diameter	Ø5 mm
Mechanical fixing	Variable brackets
Operating temperature	-20°C ... +80°C
Storage temperature	-30°C ... +90°C

## 2.MECHANICAL SPECIFICATIONS

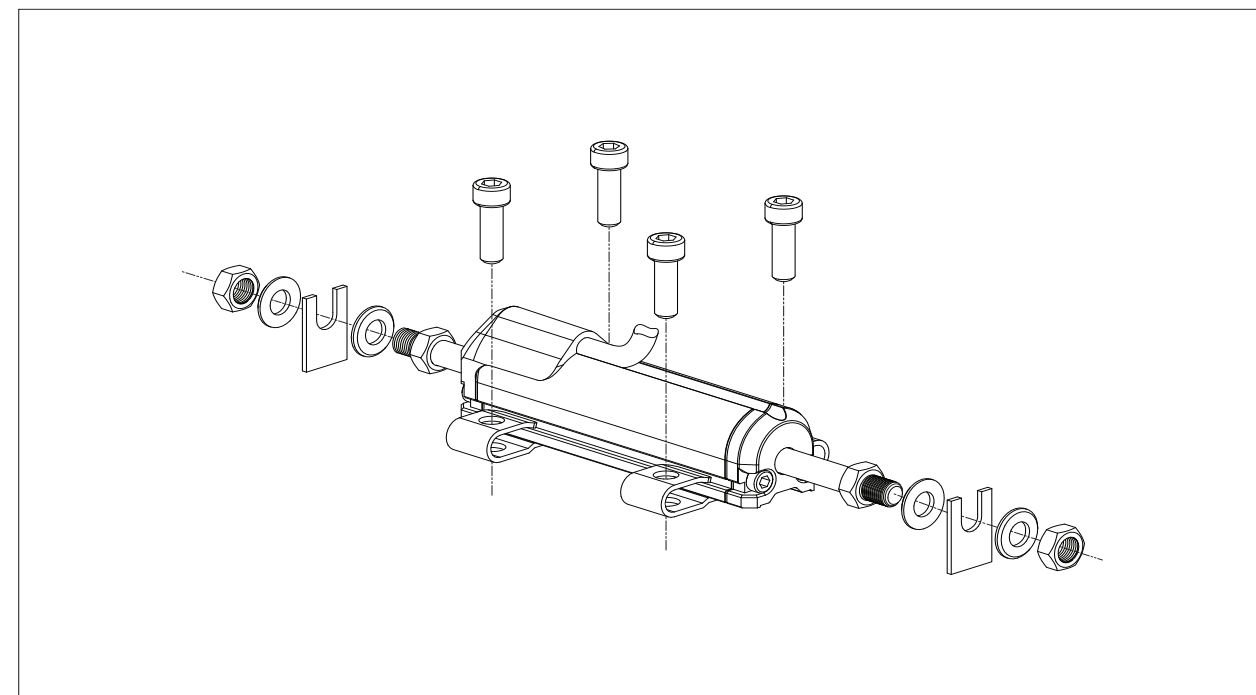


SLPK (mm)	10	25	50	75	100	125	150	175	200
US (Usefull stroke)	10	25	50	75	100	125	150	175	200
MS (Mechanical stroke)	14	29	54	79	104	129	154	179	204
L (Total length)	92	122	172	222	272	322	372	422	472

### 3.CABLE, CONNECTOR AND BRACKET



### 4.ASSEMBLY



## 5.ORDERING PRODECURE

<b>1</b>	<b>Model</b> SLPK: Linear Potentiometer Slim Body Series, Rod On The Both Sides
<b>2</b>	<b>Measurement stroke</b> 10 - 200 mm
<b>3</b>	<b>Linearity</b> A: $\pm 0.5$ ( $\leq 75$ mm) B: $\pm 0.2$ (100 - 125 mm) C: $\pm 0.1$ (130 - 200 mm)
<b>4</b>	<b>Resistance (kOhm)</b> 2K: 5 kOhm (10 - 50 mm) 5K: 10 kOhm (75 - 200 mm)
<b>5</b>	<b>Connector / Cable</b> 1M: 1 meter cable (standard) 1M5: 1,5 meter cable (optional) 2M: 2 meter cable (optional) CN5B: M16, 5 pin connector (optional)

For example:

SLPK	150	C	5K	1M
<b>1</b>	<b>2</b>	<b>3</b>	<b>4</b>	<b>5</b>