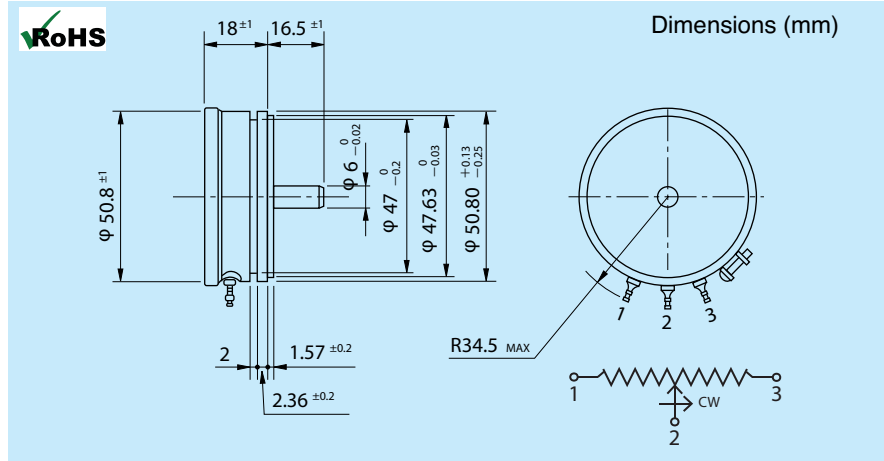


STCS50 Series

Single Turn Potentiometer (Conductive Plastic)



• General Specifications (Note 1)

Resistance Values (Ω):	500, 1K, 2K, 5K, 10K, 20K 50K, 100K, 200K, 500K	Contact Resistance Variation:	Below 2% C.R.V.
Resistance Tolerance:	Standard Class $\pm 10\%$ Precision Class $\pm 5\%$	Power Rating:	3.0W @ 70°C (0W @ 105°C)
Independent Linearity Tolerance:	Standard Class $\pm 0.5\%$ Precision Class $\pm 0.2\%$ Super Precision Class $\pm 0.05\%$	Electrical Travel:	350° $\pm 5^\circ$
Resolution:	Essentially Infinite	Mechanical Travel:	360° (continuous)
Output Smoothness:	Below 0.1% against input voltage	Insulation Resistance:	> 1000M ohms @ 1000 VDC
Rotational Life:	50,000,000 shaft revolutions (no load)	Dielectric Strength:	1 minute @ 1000 VAC
Protection Grade:	IP40	Starting Torque:	< 4mN·m (40gf·cm)
Operating Temperature:	-55°C ~ +125°C	Temperature Coefficient:	± 400 p.p.m / °C
		Vibration:	15G / 10Hz to 2,000Hz
		Shock:	50 G / 11ms
		Mass:	Approx 70g

• Special Specifications Available

Extra taps (Available up to 3 taps). Multi-ganged (up to 7 gangs, housing length extended by 12mm per gang). Shaft with front and rear extension (rear shaft with 6mm dia. and 15mm length). With stopper (angle becomes 320° and stopper strength is 0.9N·m [9kgf · cm]). Special electrical angles. Shaft with $\phi 6.35$ mm. Special machining on shaft.