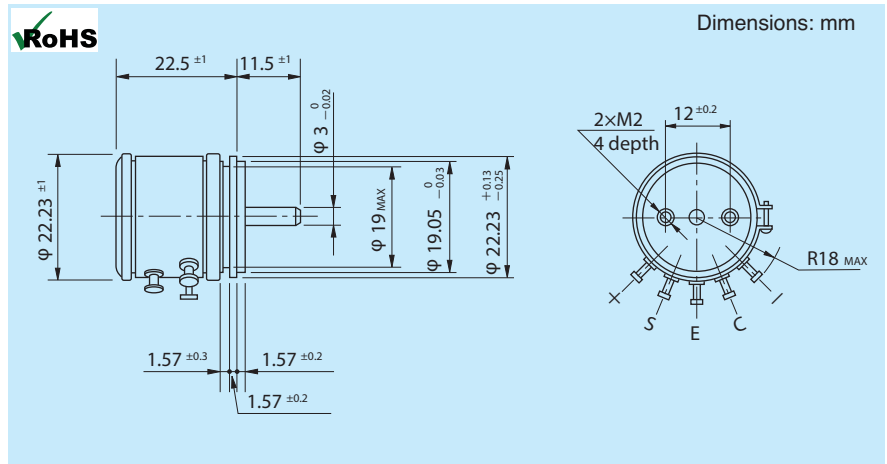


STCSC22 Series

Single Turn Sine-Cosine Potentiometer (Conductive Plastic)



• General Specifications (Note 1)

Resistance Values (Ω): 500, 1k, 2k, 5k, 10k, 20K, 50k

Total Resistance Tolerance:
Standard Class ±15%
Precision Class ±10%

Conformity Tolerance:
Standard Class ±2.0%
Precision Class ±1.0%

Resolution: Essentially infinite
Rotational Life: 50,000,000 shaft revolutions (no load)

Protection Grade: IP40
Operating Temperature: -55° to +105°C (Note 1)

Output Smoothness: Below 0.1% against input voltage

Contact Resistance Variation: Below 8% C.R.V.

Power Rating: 0.5W

Electrical Travel: 360° (continuous)

Mechanical Travel: 360° (continuous)

Starting Torque: Below 3mN · m (30gf · cm)

Resist. Temperature Coefficient: ±400p.p.m./°C

Dielectric Strength: 1 minute @ 1000VAC

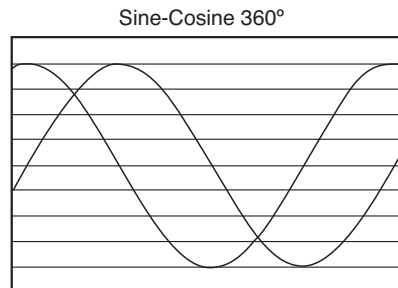
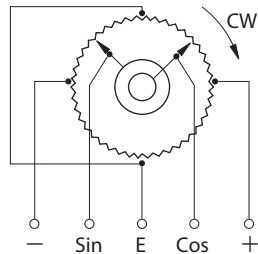
Insulation Resistance: > 1,000MΩ @ 1,000VDC

Vibration: 15 G / 10Hz to 2,000Hz

Shock: 50 G / 11ms

Mass: Approx. 20g

• Terminal Connections



• Special Specifications Available

Multi-ganged (up to 3 gangs. Housing length is extended by 16mm per gang). Shaft with front and rear extension (rear shaft with 3mm dia. and 10mm length). Shaft dia. (Ø3.175mm) with inch dimensions. Special shaft machining. Oil filled.