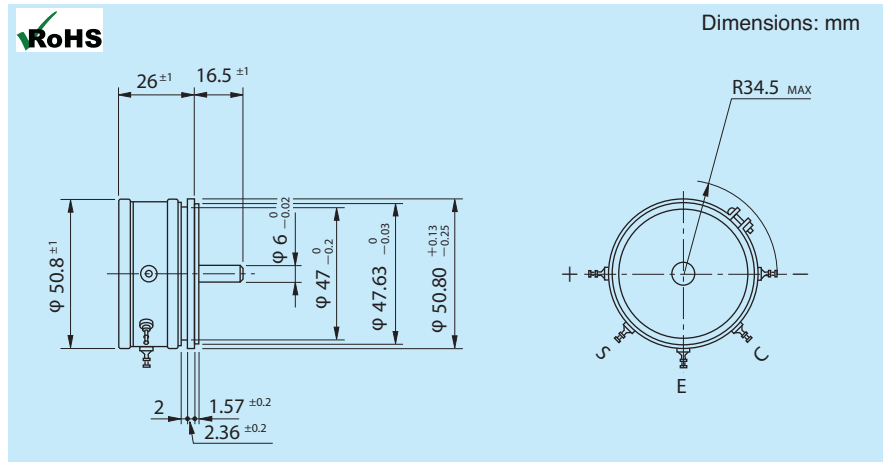


Single Turn Sine-Cosine Potentiometer (Conductive Plastic)



- **General Specifications (Note 1)**

Resistance Values (Ω): 1k, 2k, 5k, 10k, 20k
50k, 100k

Total Resistance Tolerance: Standard Class $\pm 15\%$
Precision Class $\pm 10\%$

Conformity Tolerance: Standard Class $\pm 0.5\%$
Precision Class $\pm 0.3\%$

Resolution: Essentially infinite
Rotational Life: 50,000,000 shaft revolutions (no load)

Protection Grade: IP40

Operating Temperature: -55° to +105°C (Note 1)

Output Smoothness: Below 0.1% against input voltage

Contact Resistance Variation: Below 8% C.R.V.

Power Rating: 1.25W

Electrical Travel: 360° (continuous)

Mechanical Travel: 360° (continuous)

Starting Torque: Below 5mN · m (50gf · cm)

Resist. Temperature

Coefficient: $\pm 400 \text{ p.p.m./}^{\circ}\text{C}$

Dielectric Strength: 1 minute @ 1000VAC

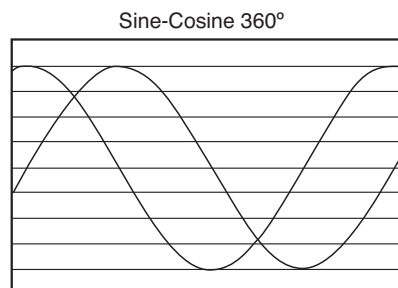
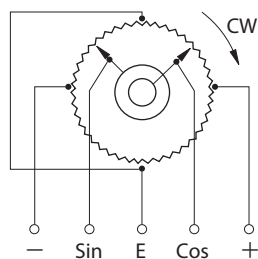
Insulation Resistance: > 1,000MΩ @ 1,000VDC

Vibration: 15 G / 10Hz to 2,000Hz

Shock: 50 G / 11ms

Mass: Approx. 120g

- **Terminal Connections**



- **Special Specifications Available**

Multi-ganged (up to 3 gangs. Housing length is extended by 17mm per gang). Shaft with front and rear extension (rear shaft with 6mm dia. and 15mm length). Shaft dia. (Ø6.35mm) with inch dimensions. Special shaft machining.

Note 1: Customers should test and verify device performance in any given application.