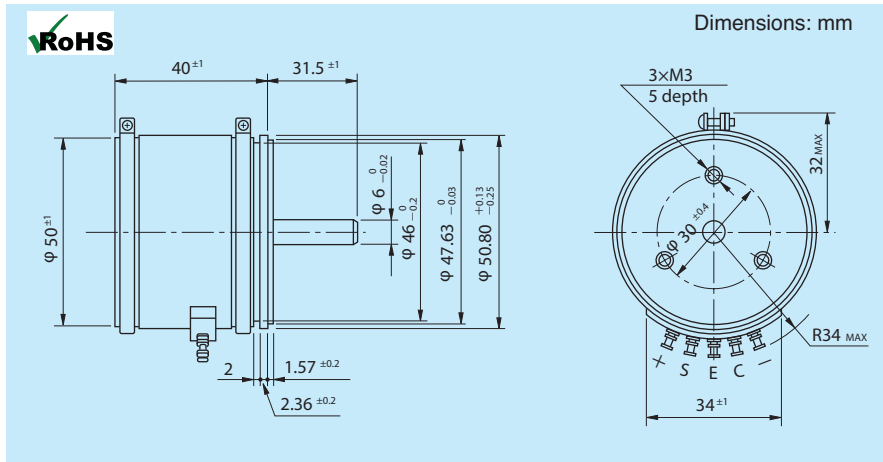


STWSC50 Series

Single Turn Sine-Cosine Potentiometer (Wirewound)



• General Specifications (Note 1)

Resistance Values (Ω): 500, 1k, 2k, 5k, 10k, 20k

Total Resistance

Tolerance: Standard Class ±5%
Precision Class ±3%

Conformity

Tolerance: Standard Class ±1.0%
Precision Class ±0.5% (> 5k)
±0.7% (≤ 5k)

Resolution: 0.05% @ 10k ohms

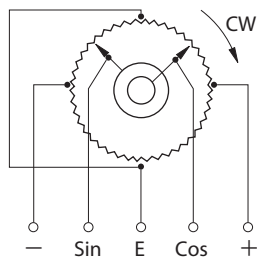
Rotational Life: 1,000,000 shaft revolutions (no load)

Protection Grade: IP40

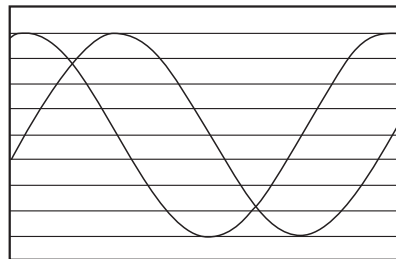
Operating Temperature: -55° to +105°C (Note 1)

Noise: < 100Ω E.N.R.
Power Rating: 2.0W
Electrical Travel: 360° (continuous)
Mechanical Travel: 360° (continuous)
Starting Torque: Below 11mN · m (110gf · cm)
Resist. Temperature Coefficient: ±20p.p.m./°C
Dielectric Strength: 1 minute @ 1000VAC
Insulation Resistance: > 1,000MΩ @ 1,000VDC
Vibration: 15 G / 10Hz to 2,000Hz
Shock: 50 G / 11ms
Mass: Approx. 160g

• Terminal Connections



Sine-Cosine 360°



• Special Specifications Available

Multi-ganged (up to 3 gangs. Housing length is extended by 30mm per gang). Shaft with front and rear extension (rear shaft with 6mm dia. and 15mm length). Bushing mount. Shaft dia. (Ø6.35mm) with inch dimensions. Special shaft machining.

Note 1: Customers should test and verify device performance in any given application.