

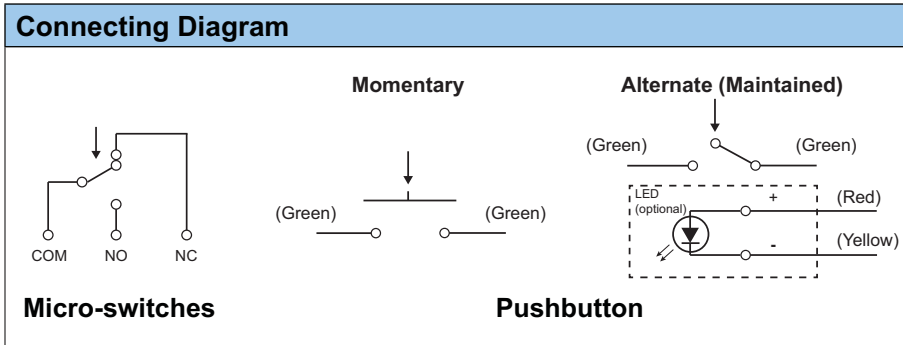
SWS4 Series

Joystick Controller (Switch)

- Single or Dual Axis
- 4 Way Switching
- Optional Pushbutton
- Optional LED or Color button
- IP65 Above Panel
- Low Cost

Electrical Data	
Micro-Switch Rating	125VAC (5A) / 250VAC (3A)
Pushbutton Rating	50VDC / 0.1A
Rating of LED	2VDC / 20mA

Mechanical Data	
Handle Operating Travel	±12° from center
Operating Force	2.2N ~ 2.8N (220gf ~ 280 gf)
Vibration	10 ~ 55Hz 98 m/s ² (10G)
Shock	294 m/s ² (30G)
Operating Life	200,000 operations
Weight	40G
Protection Class	IP65 (above panel only)
Operating Temperature	-20°C ~ +65°C



Ordering Code

Joystick Model	4 way switching	Pushbutton	Momentary Alternate (maintained) Alternate w/ LED	Pushbutton Color	Black (standard) Red Yellow Green	Pushbutton LED Color	White Red Yellow Green	<p>Notes when ordering:</p> <p>Pushbutton knob can be configured with either a colored pushbutton or LED but not both. LED option is only available for alternate type pushbutton.</p>
SWS	4 x 4		PBM PBA PBAL		B R Y G		W R Y G	

Example 1: SWS 4 x 4

(Switch joystick w/ 4 way switching, standard black knob)

Example 2: SWS 4 x 4 PBM B

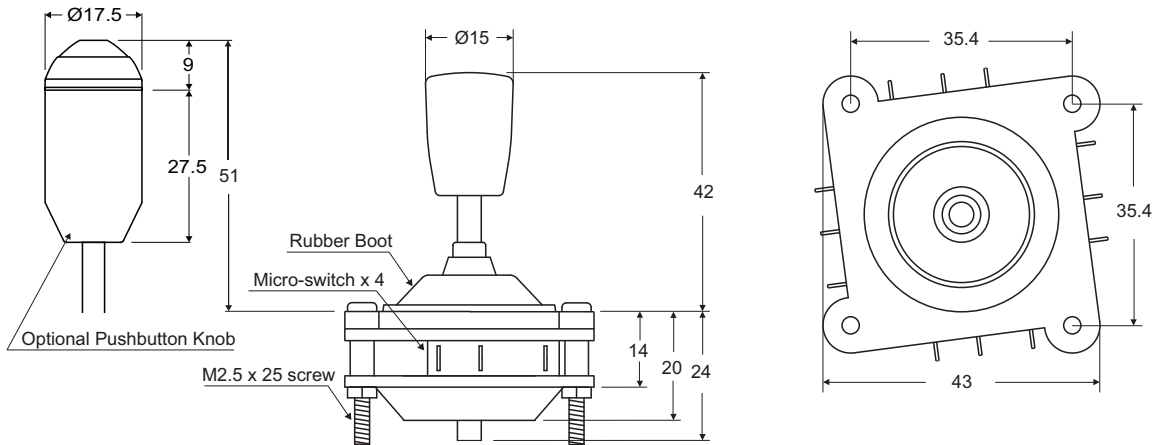
(Switch joystick w/ 4 way switching, momentary pushbutton knob, black pushbutton)

SWS4 Series

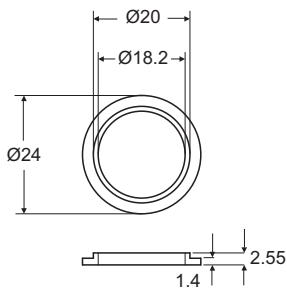
Joystick Controller

(Switch)

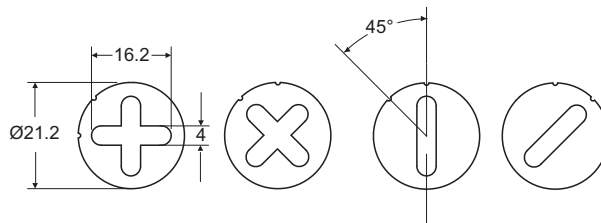
Dimensions (mm)



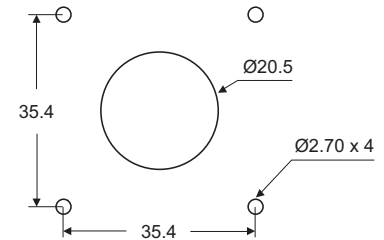
Bezel



Stainless Steel Snap On Limiter Plate



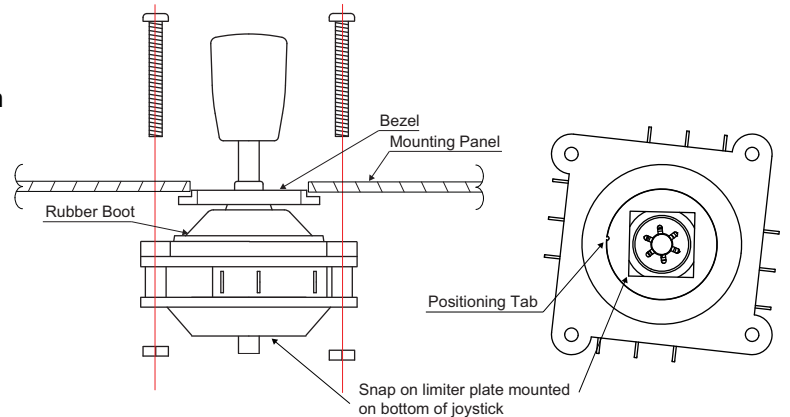
Panel Arrangements



Mounting and Limiter Plate

Note on limiter plate:

1. Snap on limiter plate positioning grooves align with joystick positioning tab.
2. Pay attention to the direction of limiter plate as multiple position grooves allow for multiple operating patterns
3. Use glue or epoxy suitable for metal to plastic bonding to avoid any erroneous separation



Options

- Special Shaft Length

- Alternate Switch Rating

Other options and customer specific versions may be available upon request. Please contact us.
All specifications are subject to change without notice.