

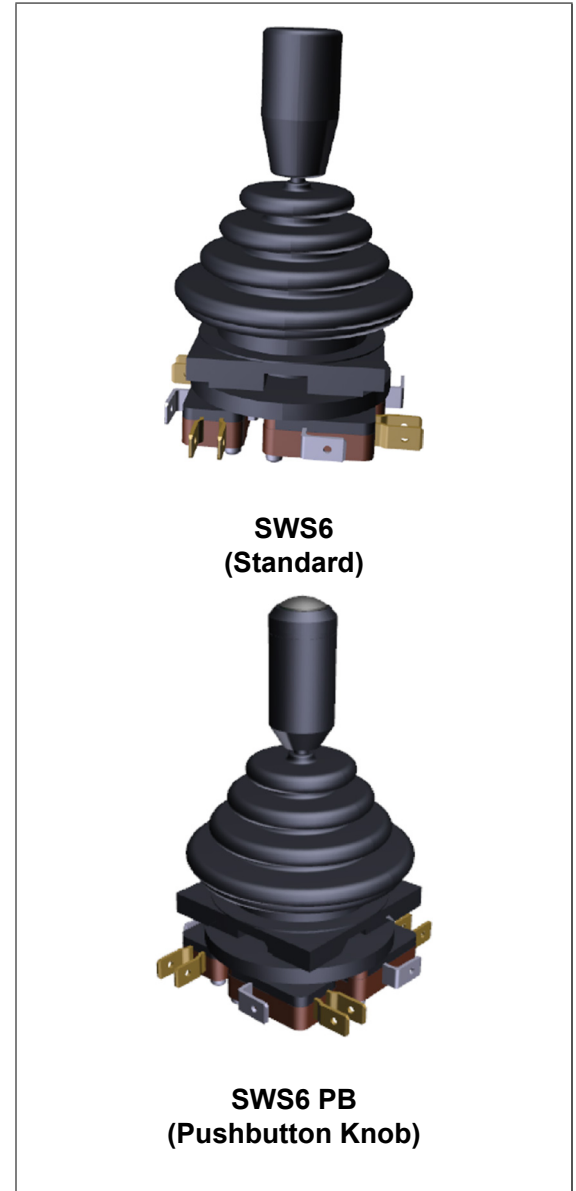
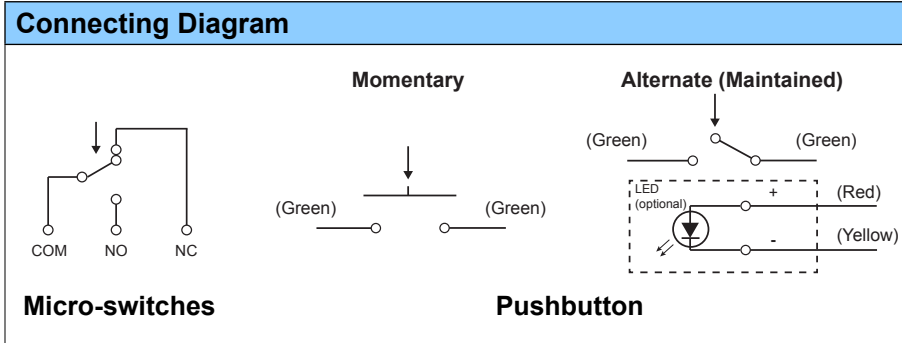
## Switch Joystick

- Single or Dual Axis
- 4 Way Switching
- Optional Pushbutton
- Optional LED or Color button
- High Current Micro-switches
- IP65 Above Panel

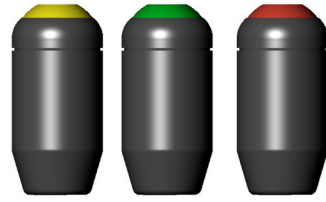
## Series SWS6

Electrical Data	
Micro-Switch Rating	250VAC / 21(8)A
Pushbutton Rating	48VDC / 0.1A
Rating of LED	2VDC / 20mA

Mechanical Data	
Handle Operating Travel	±20° from center
Operating Force	2.5N ~ 3.5N (250gf ~ 350 gf)
Vibration	10 ~ 55Hz 98 m/s <sup>2</sup> (10G)
Shock	294 m/s <sup>2</sup> (30G)
Operating Life	500,000 operations
Weight	140G
Protection Class	IP65 (above panel only)
Operating Temperature	-20°C ~ +65°C



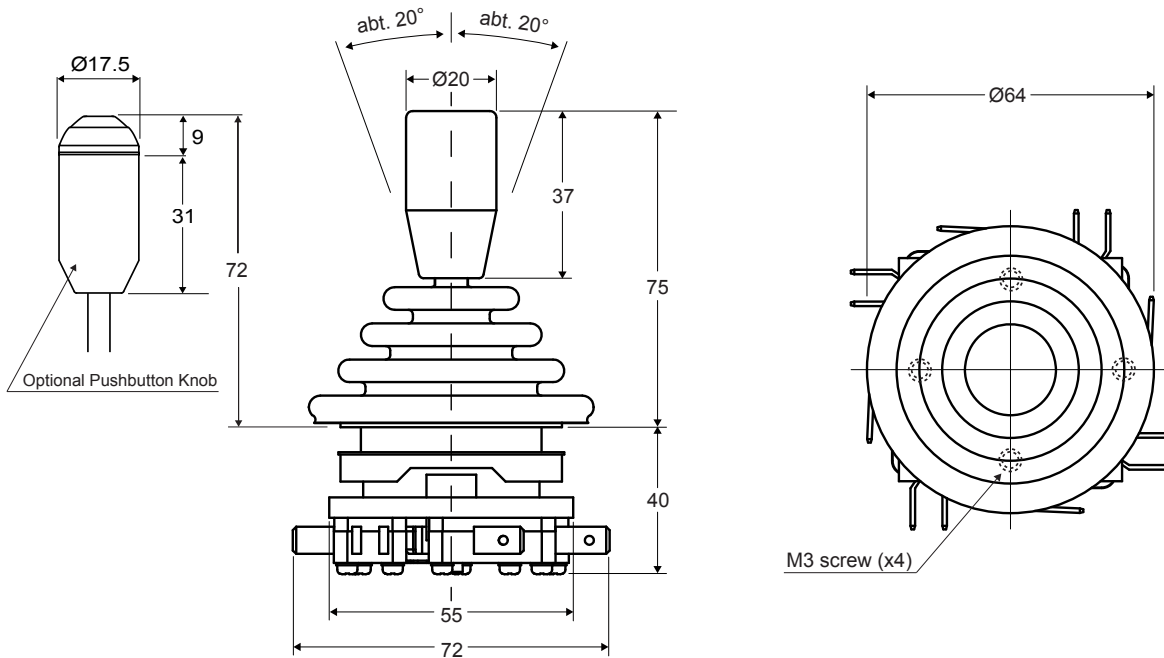
## Ordering Code

Joystick Model	Pushbutton	Momentary Alternate (maintained) Alternate w/ LED	Pushbutton Color	Pushbutton LED Color	Ordering Examples	Optional Pushbutton Colors
SWS 6	PBM PBA PBAL		Black (standard) Red Yellow Green	White Red Yellow Green	SWS6 SWS6 PBM B SWS6 PBM G SWS6 PBA R SWS6 PBA Y SWS6 PBAL W SWS6 PBAL Y	 <p>Yellow      Green      Red</p>

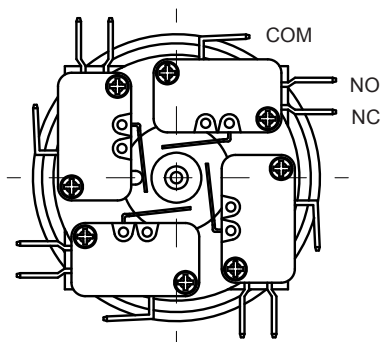
**Switch Joystick**

**Series SWS6**

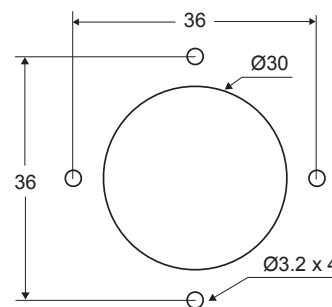
**Dimensions (mm)**



**Switch Arrangement**



**Panel Arrangement**



**Options**

- Special Shaft Length

- Alternate Switch Rating

- IP67 Protection Class

Other options and customer specific versions may be available upon request. Please contact us.  
All specifications are subject to change without notice.